

CATALOGUE

#688, JULY 6, 2026



Dear collector friend,

<https://hdphilatelist.com/EPL688.pdf>

This week's catalogue features a Kingston Barracks 1d Soldier Concessionary rate; a selection of Railway Company covers incl Lower Laurentian Railway, Oxford Mountain Railway and Lotbinière & Mégantic Railway; a 2¢ adjacent-post-office rate Le Breton Flats to Ottawa; several lettercards to destination incl Lethbridge to Belgium, Hong Kong and Turks & Caicos Islands; Gartrell BC RF E; Frome Ont Post Office RPPC; plus a broad assortment of general postal history. All prices in Canadian dollars, taxes added where applicable. Inquiries or purchases by email or by phone at (418) 655-4132..

Have a great week
Hugo

HUGO DESHAYE (Philatelist) Inc.

HUGO DESHAYE, MMM CD FSHPQ FRPSC OTB

CSDA - BNAPS - PHSC - RPSC - SHPQ - PSSC - TPC - CCQ - CAS - USPCS - APS - CCNY - CPS - RPSL





Item 688-01 – **Aberdeenshire to Montreal** – 1814, family letter from Tullich near Ballater, Aberdeenshire to Montreal; endorsed “*To be forwarded by Mr. Benjamin Greig, Merchant, Glasgow*”. From William Logan to his brother Hart Logan, Merchant at Montreal. Paid 11½d stg for the 170–230-mile plus ½d Scottish road tax; missent to Birmingham, then redirected to Glasgow for private-ship forwarding to Quebec (JY 10 14). Entered in BNA as ship letter with Quebec Ship Letter Crown and Fleuron (b/s), rated 10d collect in Montreal (9d postage + 1d ship fee). The Logan brothers, Hart and Robert, were prominent Scottish-Canadian entrepreneurs and fur traders in Montreal; in 1814 Hart operated a major importing firm and shipyard at London/Montreal, while Robert was active with the North West Company and Hudson’s Bay Company. \$750.00



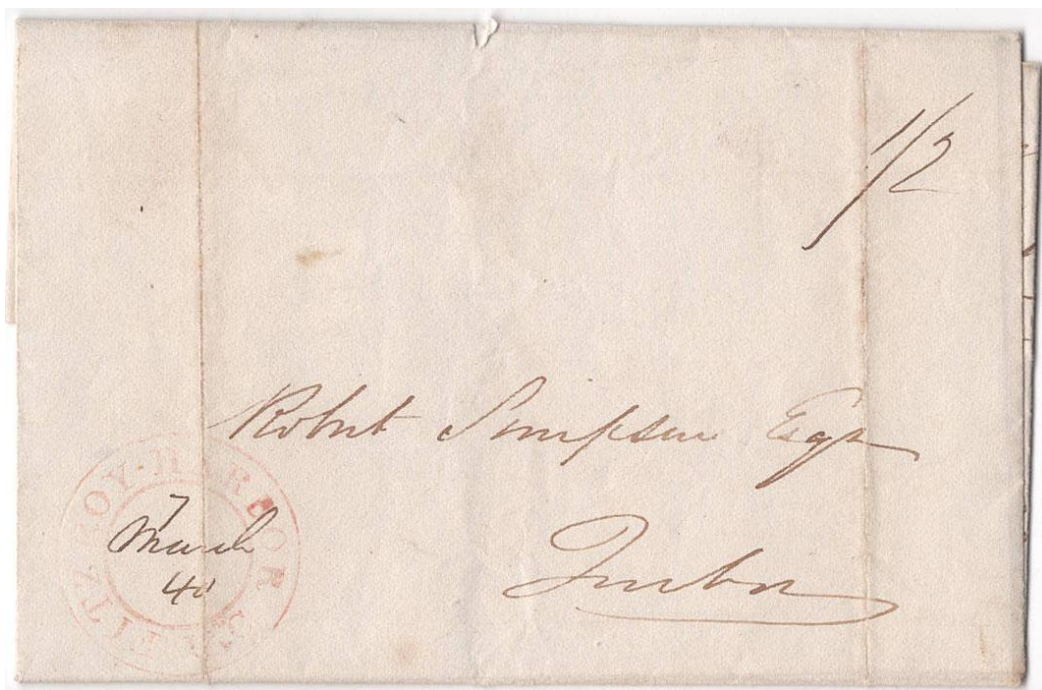
Item 688-02– **1d Soldier Concessionary rate, Kingston Barracks** – 1830, family letter datelined Kingston Barracks rated 1d Soldier Concessionary rate to North Britain. Quebec transit with red Fleuron on front JY 13 30. From Pte Alexander Fletcher, 79th Regt, endorsed at top and countersigned at lower left by Colonel Douglas. Fletcher is documented at Quebec in 1826, Kingston in 1830, and Amherstburg in 1831–32. Addressed to his brother at Pultney, Scotland. Carried by Falmouth packet via Quebec and Halifax; arrived at Edinburgh as a paid letter SE 6 30. Contents note he had one more year to complete his 15 years' service, after which he could claim discharge and receive three months' wages. I have handled a few Fletcher letters including one at Amherstburg dated July 1831, confirming he served well that period. \$1,000.00



Item 688-03 – **Adelaide UC double circle in blue (1833-1842)** – 1837, folded money letter from Adelaide UC, double-circle in blue dated FE 12 37, sent under postmaster free frank to Alexander Hamilton, Postmaster at Queenston. Short message concerning payment of American postage collected at Adelaide. This Adelaide marking is from the first period of this Middlesex office, 1833–1842, before its 1844 reopening; a rare postmark. \$300.00



Item 688-04 – **Adelaide UC double circle in red (1833-1842)** – 1842, folded cover from Adelaide UC, double-circle in red dated JY 31 42, rated 9d collect to Toronto. As with the 1837 money letter, this strike belongs to the first period of the Adelaide UC office, 1833–1842, prior to its 1844 reopening; a rare and desirable postmark. \$200.00



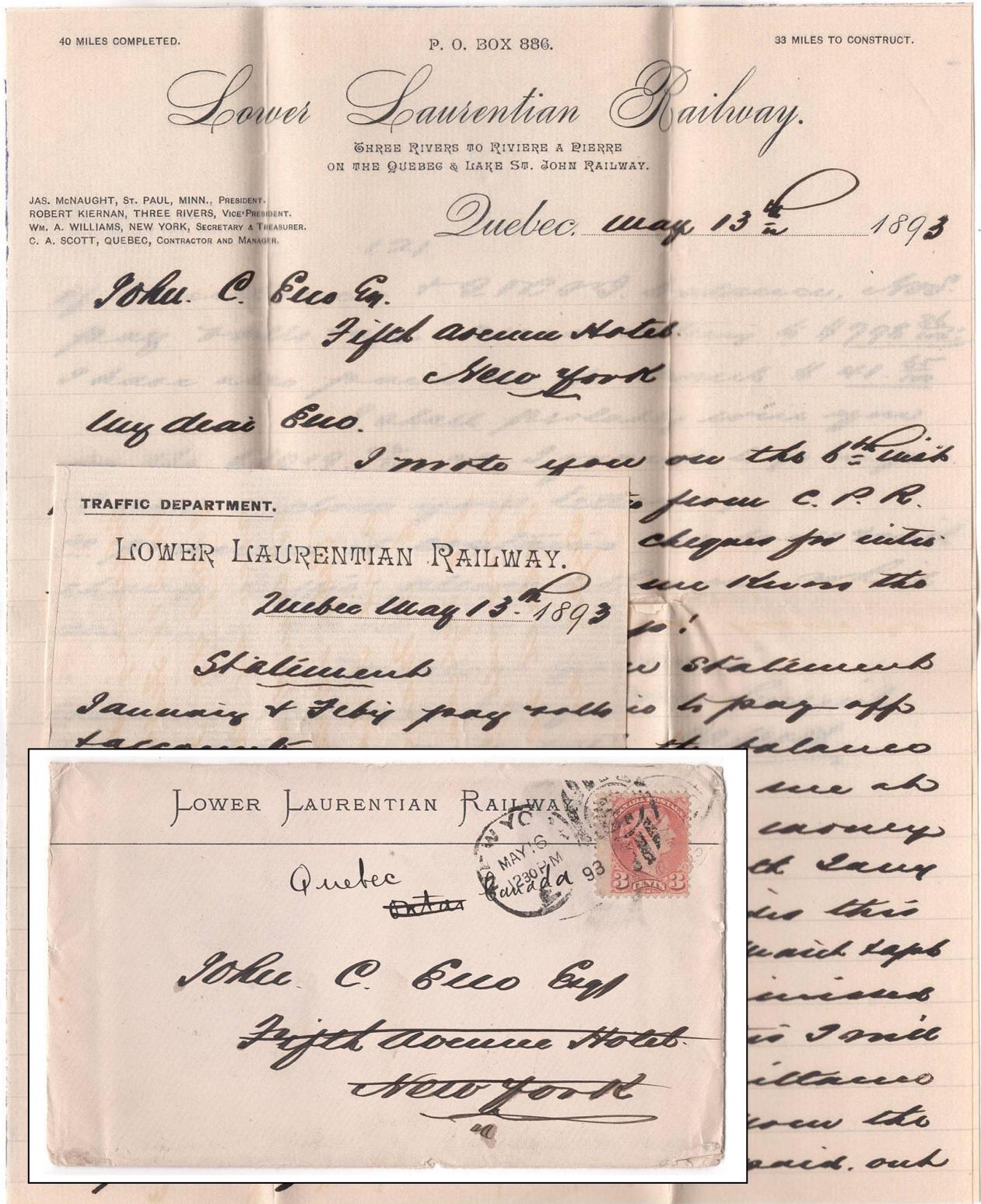
Item 688-05 – **Fitzroy Harbor UC (Carleton)** – 1840, business folded letter datelined Victoria from Thomas Buchanan, mailed from Fitzroy Harbour UC, rated 1/2d collect to Quebec. Fitzroy double-circle, in use 1838–1848, belonging to Carleton County. \$125.00



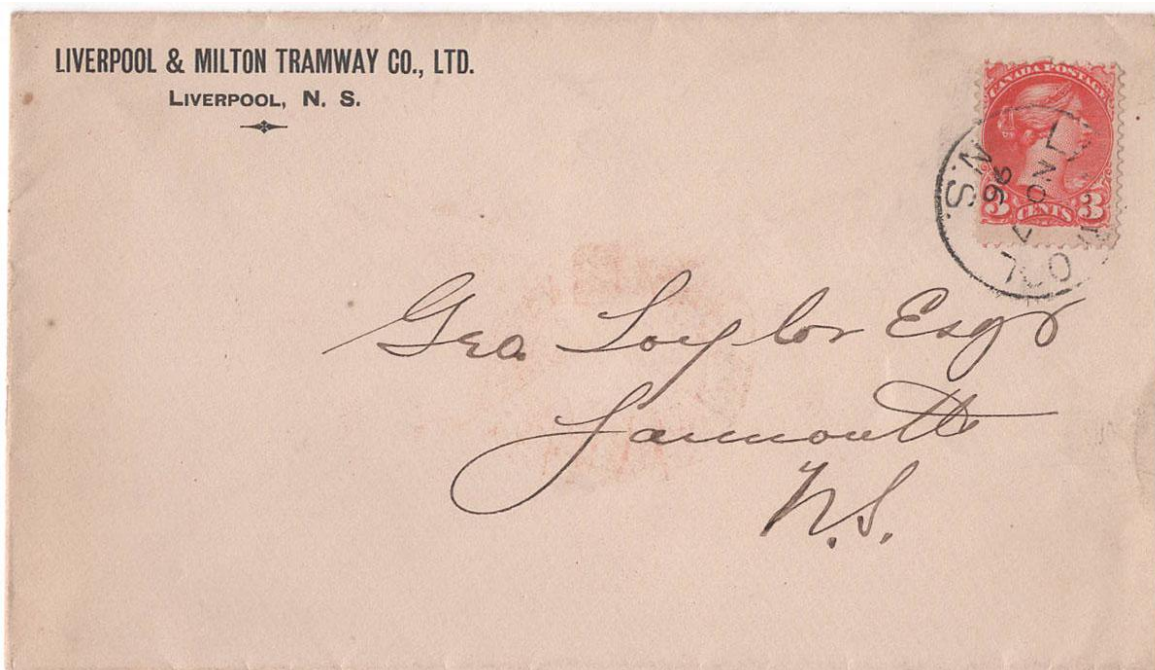
Item 688-06 – **Fitzroy Harbor UC (Carleton)** – 1843, folded cover from Fitzroy Harbour UC rated 9d collect to Kingston; Fitzroy double-circle in use 1838–1848. Inside the outer sheet is a plan of concession lot no. 28 near Clarendon, showing the Ottawa River; docketing notes indicate the contents concern a survey of certain lots in Litchfield. \$125.00



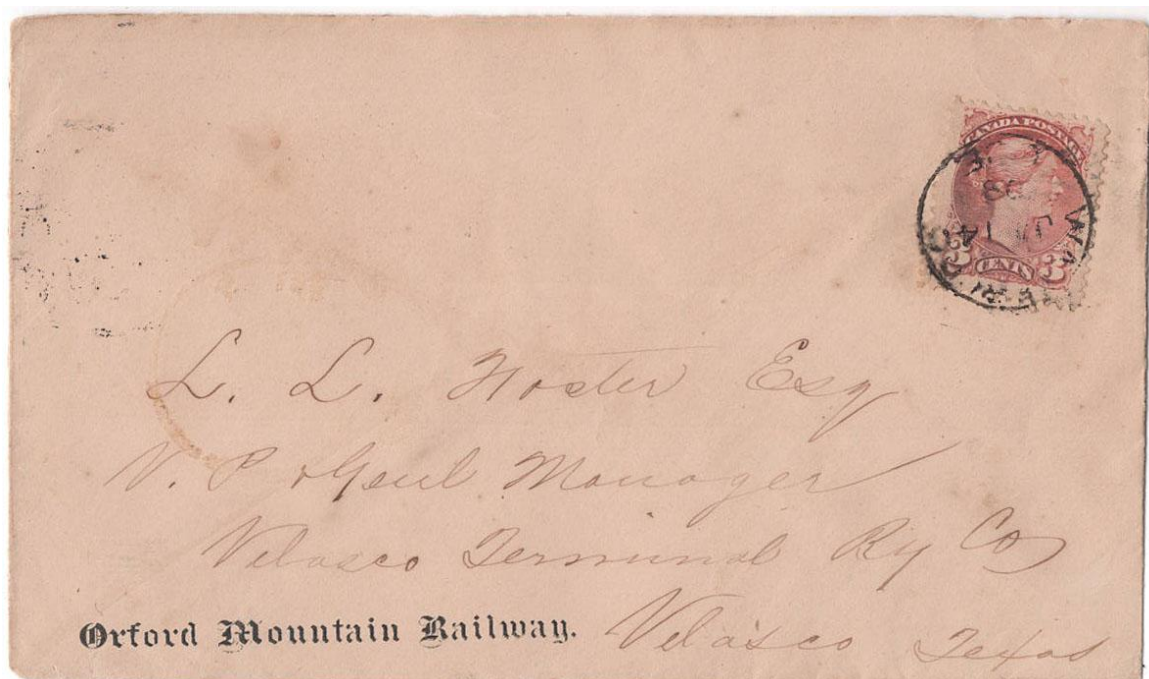
Item 688-07 – **Private Paid G.T.R.C.** – 1863, Grand Trunk Railway cover from the GM's Office, mailed at Montreal with Tombstone and private "Paid G.T.R.C." handstamp, paid 5¢ to Whitby (b/s). \$150.00



Item 688-08 – **Lower Laurentian Railway** – 1893, 3¢ SQ tied by faint Quebec cds and New York duplex receiver on Lower Laurentian Railway cover, letter and memo enclosed, paid 3¢ letter rate to New York. The Lower Laurentian Railway was a 40-mile Quebec line connecting Rivière-à-Pierre to Proulx Junction near Shawinigan and Grandes-Piles; previously known as the St. Lawrence, Lower Laurentian & Saguenay Railway, renamed in 1888 and operating on the Quebec & Lake St. John lines. \$200.00



Item 688-09 – **Liverpool & Milton Tramway Company** – 1896, 3¢ SQ tied by Liverpool NS cds on Liverpool & Milton Tramway Company c/c cover paying 3¢ letter rate to Yarmouth (b/s). The Liverpool and Milton Tramway Company was a steam-powered short line in Nova Scotia. Operating a 5-mile route along the Mersey River between Liverpool and Rapid Falls, it primarily hauled pulp slabs and freight for local pulp mills. Etc. Very scarce. \$100.00



Item 688-10 – **Oxford Mountain Railway** – 1896, 3¢ SQ tied by Waterloo Que cds on Oxford Mountain Railway c/c cover paying 3¢ letter rate to Texas (b/s). The Oxford Mountain Railway was a short line operating between North Troy, Vermont and Windsor Mills, Quebec; completed early in the 20th century, its 50-mile track later became the CPR Oxford Mountain Subdivision until abandonment in December 1941. Very scarce. \$100.00

FREIGHT ADVICE NOTE Form No. —

TORONTO AND NIPISSING RAILWAY.

Mr. Skene *Goodwood June 1st 1877*

The undermentioned Goods having arrived at this Station to your address, I beg to inform you that they remain here ENTIRELY at the OWNER'S RISK, and that this Company will not hold themselves responsible for DAMAGE by Fire, the Act of God, Civil Commotion, Vandalism, Deterioration of Quality or Quantity by storage or otherwise. A charge for Storage will be made on all Freight remaining in the Company's Warehouse over 24 hours after arrival.

I am your obedient servant,
Geo. D. Norman Agent.

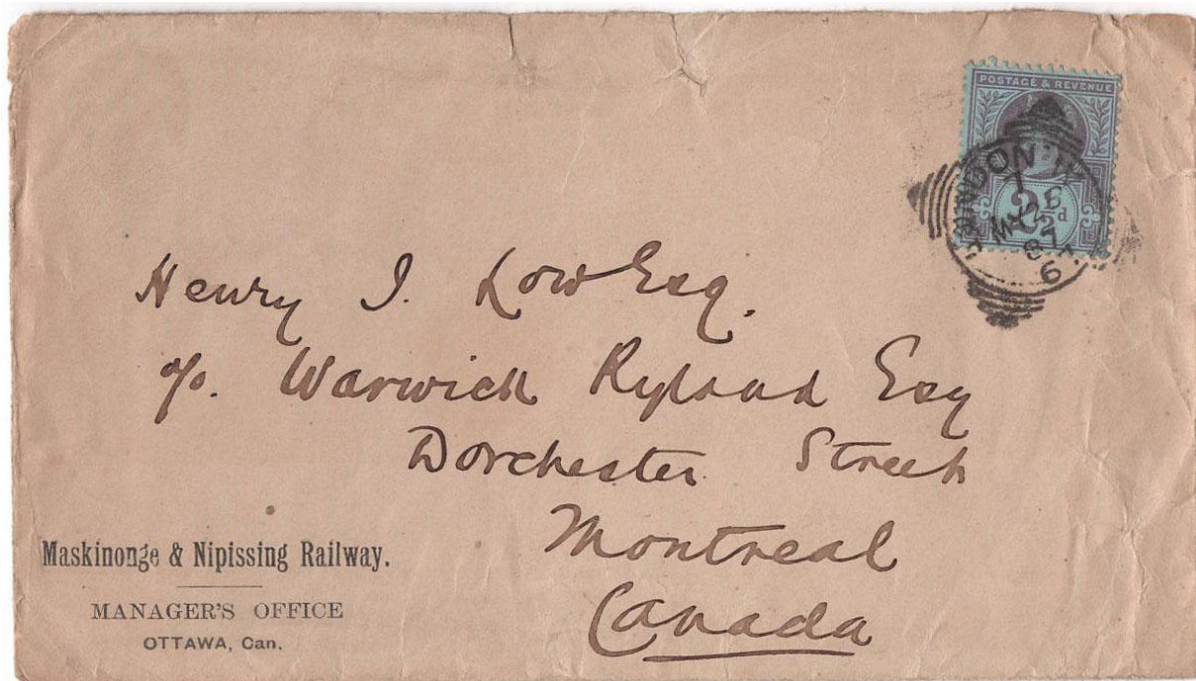
FROM.	No. of Way-Bill.	SENDER.	No. of Packages.	Species of Goods and Marks.	Paid on \$ c.	Weight in lbs.	Rate.	TOTAL \$ c.
<i>Agincourt</i>	<i>4</i>	<i>J. Bear</i>	<i>1</i>	<i>Roaper & Cutfit</i>		<i>1050 24</i>	<i>2.50</i>	

paid June 5/77

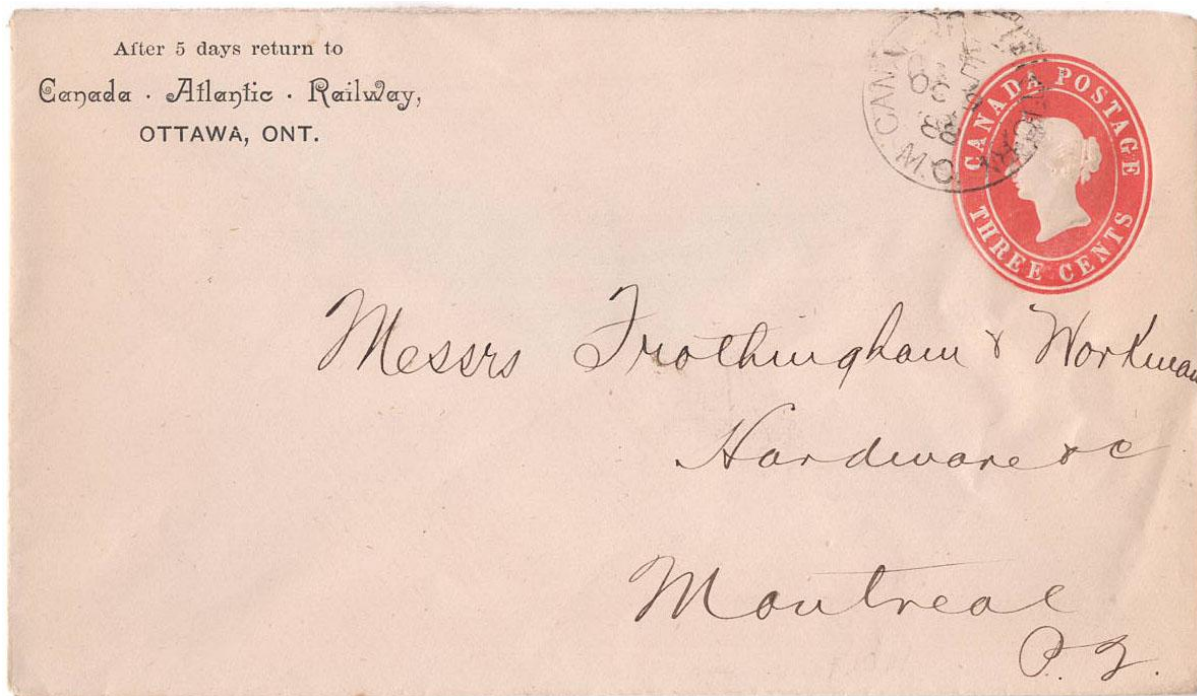
NOTICE.—No portion of a consignment of Goods to be delivered until the Freight on the whole is paid. The directors require the Freight to be paid on delivery. All cheques must be accepted by the Bank before they can be received. The above-named Goods will not be delivered unless this note be produced.



Item 688-11 – **John Beare – Toronto & Nipissing Railway** – 1877, 3¢ SQ tied by fancy cancel on cover from Uxbridge Ont paying 3¢ letter rate to Armadale (b/s) via Unionville (b/s). Freight notice of the Toronto & Nipissing Railway accompanies. Cover reduced at right. A very scarce T&NR company paper mailed to Beare. \$125.00



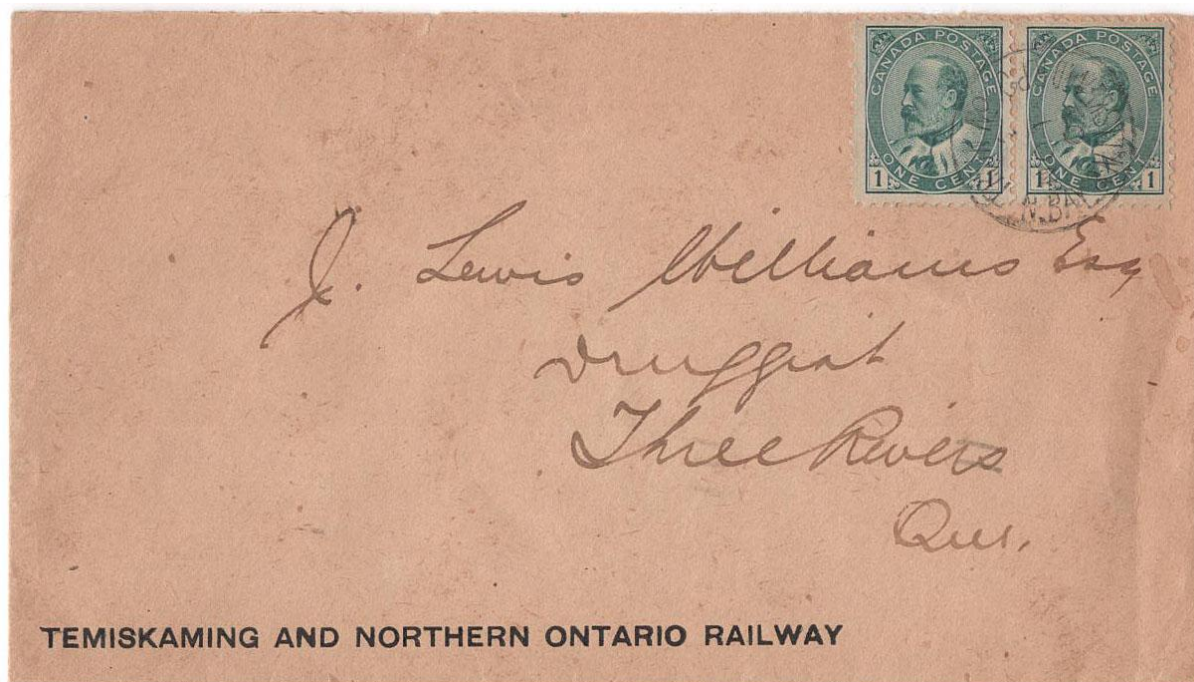
Item 688-12 – **Maskinongé & Nipissing Railway (Ottawa)** – 1887, GB 2½d tied by London squared circle “67” on Maskinongé & Nipissing Railway of Ottawa c/c cover to Montreal. Small edge tears at top. Very scarce. \$75.00



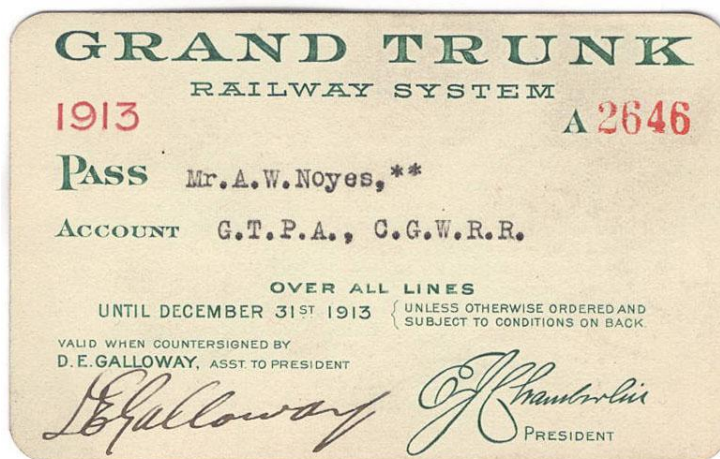
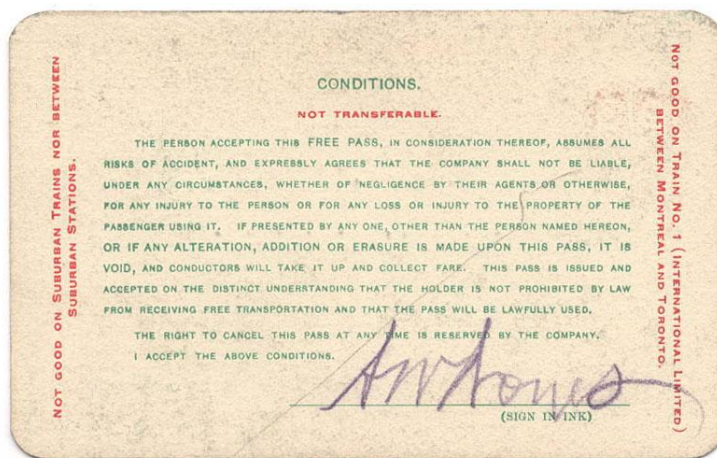
Item 688-13 – **Can Atlantic Ry M.C.** – 1888, 3¢ Victoria stationery envelope with Canada Atlantic Railway Ottawa c/c, mailed on Canada Atlantic Ry M.C., paying 3¢ letter rate to Montreal (b/s). Gray RY-11 (1883-1894), RF C. \$100.00



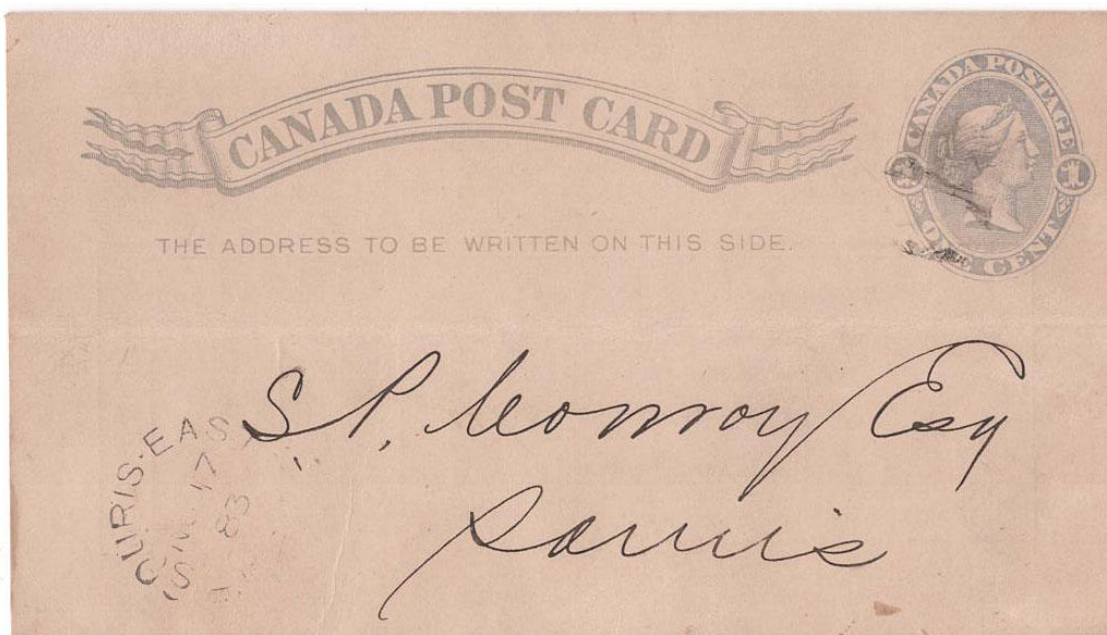
Item 688-14 – **Lotbinière & Megantic Railway** – 1898, 3¢ SQ tied by Quebec Canada duplex on Lotbinière & Megantic Railway c/c cover paying 3¢ letter rate to Texas (b/s). The Lotbinière & Megantic Railway (L&M) was a 30-mile Quebec line connecting the St. Lawrence River port of Saint-Jean-des-Chaillons in Lotbinière County with Lyster Station in Mégantic County. \$100.00



Item 688-15 – **Temiskaming & Northern Ontario Railway** – 1907, 1¢ Edward (2) tied by North Bay & New Liskeard RPO cds on Temiskaming & Northern Ontario Railway c/c cover, Gray ON-337, RF E, 1906–1909, paying 2¢ letter rate to Three Rivers (b/s). \$100.00



Item 688-16 – **Grand Trunk Railway annual pass** – 1913, Grand Trunk Railway System annual pass issued to A.W. Noyes for account of the Grand Trunk Pacific Association and Chicago Great Western Railway, signed by D.E. Galloway, valid over all lines. \$100.00



NOTICE. Form No. 36.

PRINCE EDWARD ISLAND RAILWAY.

Souris Station, *16 Nov.* 188*3*

The undermentioned Freight, consigned to you, has arrived here this day. We will thank you to send for it as soon as possible, as it remains here at YOUR RISK AND EXPENSE.

Agent.

FROM.	NO. AND DESCRIPTION OF PACKAGE.	WEIGHT. LBS.	P. E. I. R. Charges.		Back Charges.		TOTAL TO PAY	
			\$	c.	\$	c.	\$	c.
<i>Slide</i>	<i>1 Corals</i>	<i>1270</i>	<i>1 06</i>	<i>15</i>	<i>2 74</i>	<i>—</i>	<i>—</i>	<i>4 40</i>
	<i>4 Cases</i>							
	<i>1 Box Enamel</i>							
	<i>2 Boxes Pipes</i>							
TOTALS.								

When sending for the Freight return this card, accompanied by the amount of charges, as otherwise it will not be delivered.

\$ 2 85⁰⁰

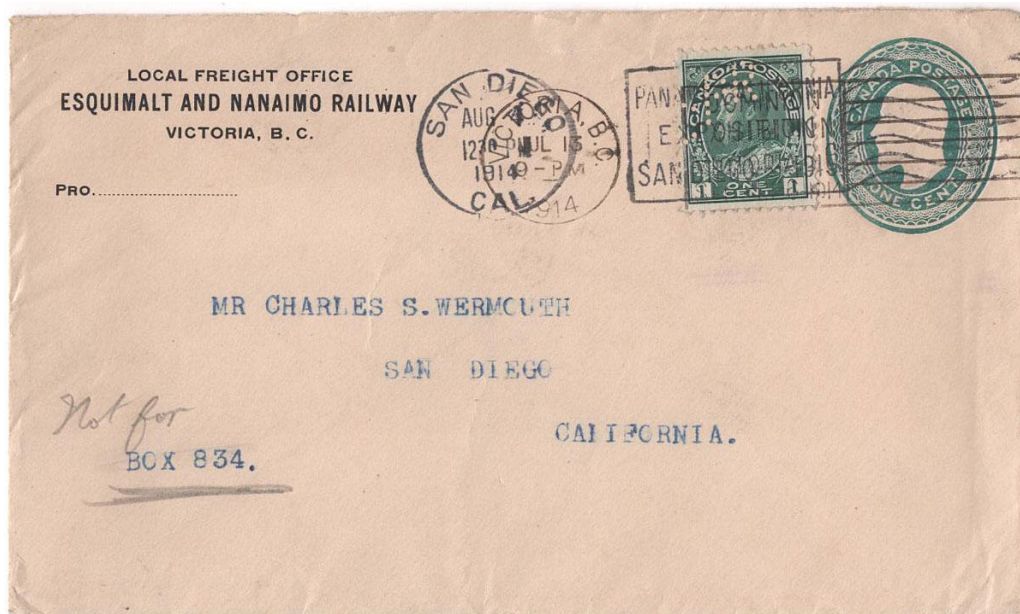
Item 688-17 – **Prince Edward Island Railway** – 1883, 1¢ stationery card mailed from Souris East to Souris; reverse with Prince Edward Island Railway freight notice. The Prince Edward Island Railway was narrow railway spanning the island from Tignish to Elmira. Built between 1871 and 1875, its staggering construction costs nearly bankrupted the Island, ultimately forcing PEI to join Canadian Confederation in 1873. \$100.00 **SOLD**



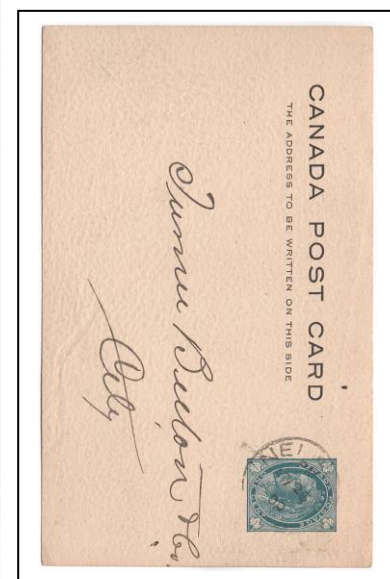
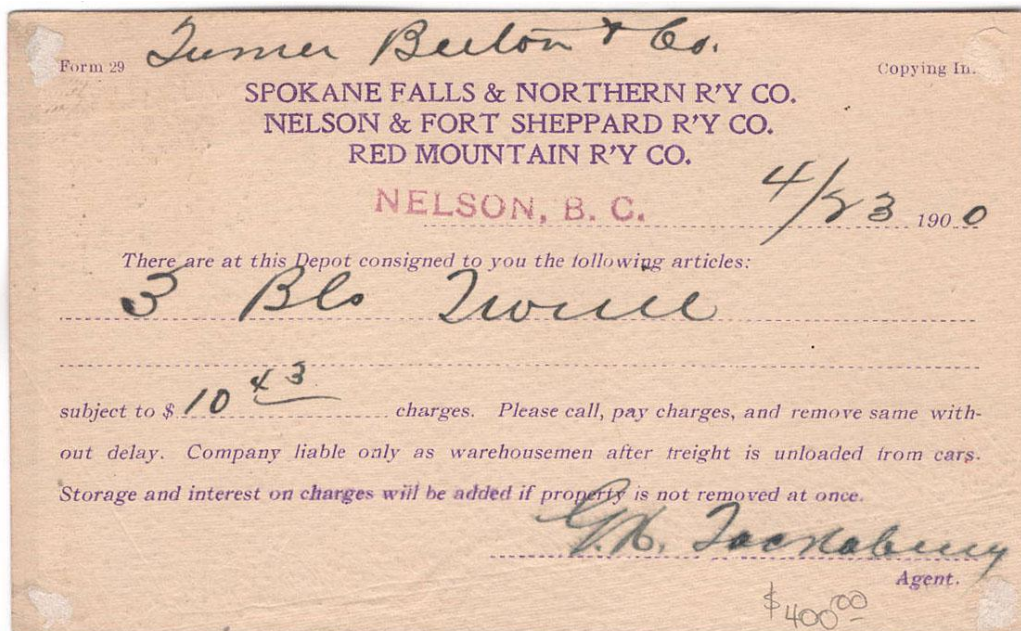
Item 688-18 – **Dominion Atlantic Railway private postcard** – 1897, 1¢ Jubilee tied by Halifax & Yarmouth M.C. cds on Dominion Atlantic Railway private postcard, paying 1¢ postcard rate to St. John NB. The Dominion Atlantic Railway operated for about a century in western Nova Scotia, running chiefly through the Annapolis Valley. Attractive Jubilee railway-theme card. \$150.00 **SOLD**



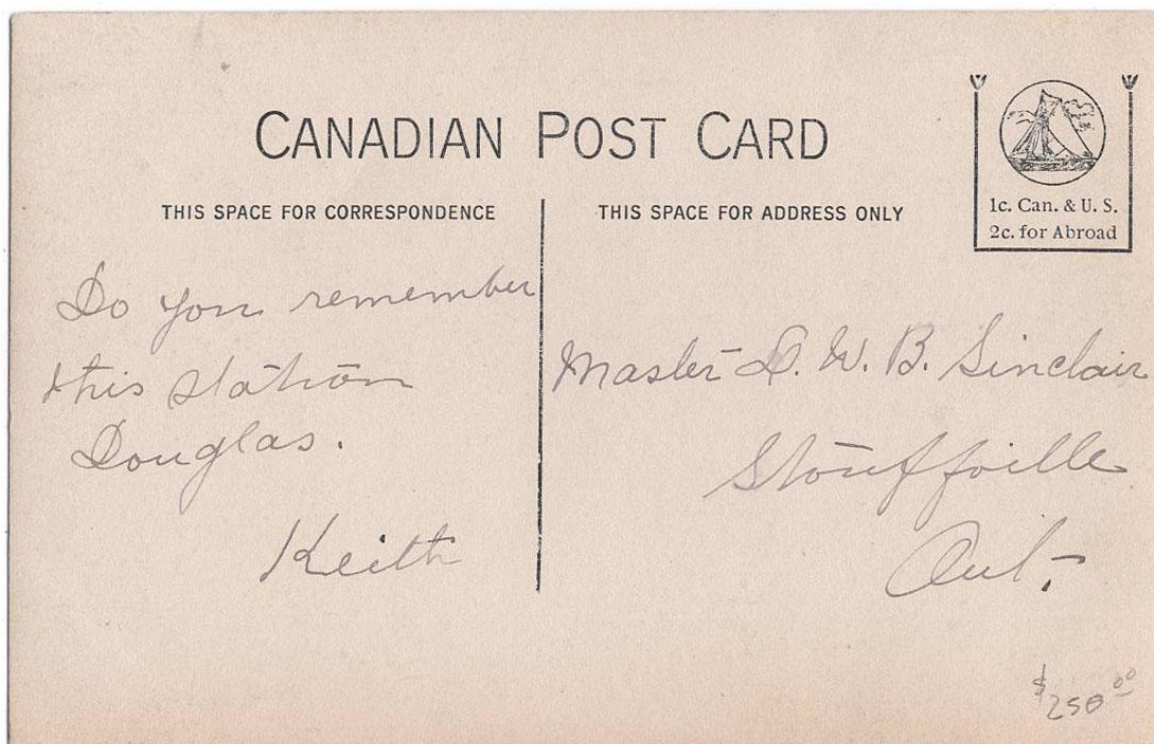
Item 688-19 – **Reid Newfoundland Co.** – 1907, 2¢ Royal Family tied by Newfoundland Railway TPO cds dated MY 23 07 on Reid Newfoundland Co. c/c cover, paying 2¢ letter rate to Lewisport (b/s). The Reid Newfoundland Company, incorporated in 1901 by Sir Robert Gillespie Reid, operated the Newfoundland Railway along with the island's coastal steamers, telegraph lines, and other transport services. \$125.00 **SOLD**



Item 688-20 – **Esquimalt & Nanaimo Railway** – 1914, 1¢ Admiral with CPR perfin tied by Victoria machine cancel on 1¢ PSE with privately added Esquimalt & Nanaimo Railway c/c, paying 2¢ letter rate to San Diego (receiver on front). Likely a standard 1¢ PSE with privately added E&N corner card. The Esquimalt & Nanaimo Railway, incorporated in 1883 by Sir Robert Dunsmuir, was a 289-km Vancouver Island line from Victoria to Courtenay with a branch to Port Alberni; acquired by the CPR in 1905 as a subsidiary, explaining the CPR perfin usage. \$100.00 **SOLD**



Item 688-21 – **Nelson BC, Railway Company freight card** – 1900, 1¢ Maple Leaf stationery card mailed in Nelson BC to local reverse with Spokane Falls, Northern Railway Co., Nelson & Fort Sheppard Railway Co. and Red Mountain Railway Co. freight notice. These were a group of interconnected, late-19th-century railway companies built by American financier Daniel Chase Corbin to connect the resource-rich mining towns of British Columbia with the commercial hub of Spokane, Washington. They were all purchased in 1898 and absorbed into James J. Hill's Great Northern Railway. \$150.00 **SOLD**



Item 688-22 – **St. Williams Ont Railway Station RPPC (Norfolk)** – c.1905, St. Williams Ont GTR Railway Station real photo postcard, written but not posted. A scarce card. \$200.00



Item 688-23 – Belmont Ont Railway Station RPPC (Middlesex/Elgin) – c.1905, Belmont Ont CPR Railway Station real photo postcard, unused with divided back. Image shows three men on the station platform, one seated on the wooden retaining wall awaiting his train. A scarce card. \$200.00 **SOLD**

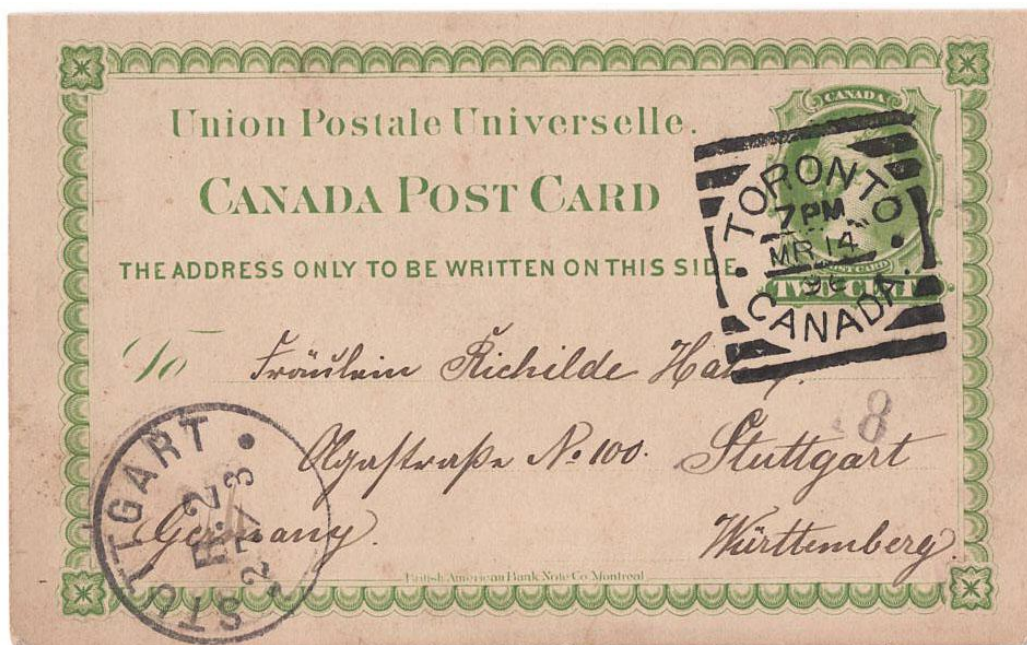


Item 688-24 – **Courtright Ont Railway Station RPPC (Lambton)** – 1908, Courtright Ont Railway Station real photo postcard, written and mailed from Courtright to Detroit. Image shows men and children waiting for the train. A rare card. \$200.00 **SOLD**



Item 688-25 – **Western Marine Railway Ltd, Burin Nfld** – 1933, 1¢ (2) and 3¢ Resources Issue tied by Burin Newfoundland Post Office handstamp on Western Marine Railway Ltd c/c cover, paying 5¢ letter rate to Halifax. Back flap roughly opened, not visible from the front and no paper lost. \$50.00

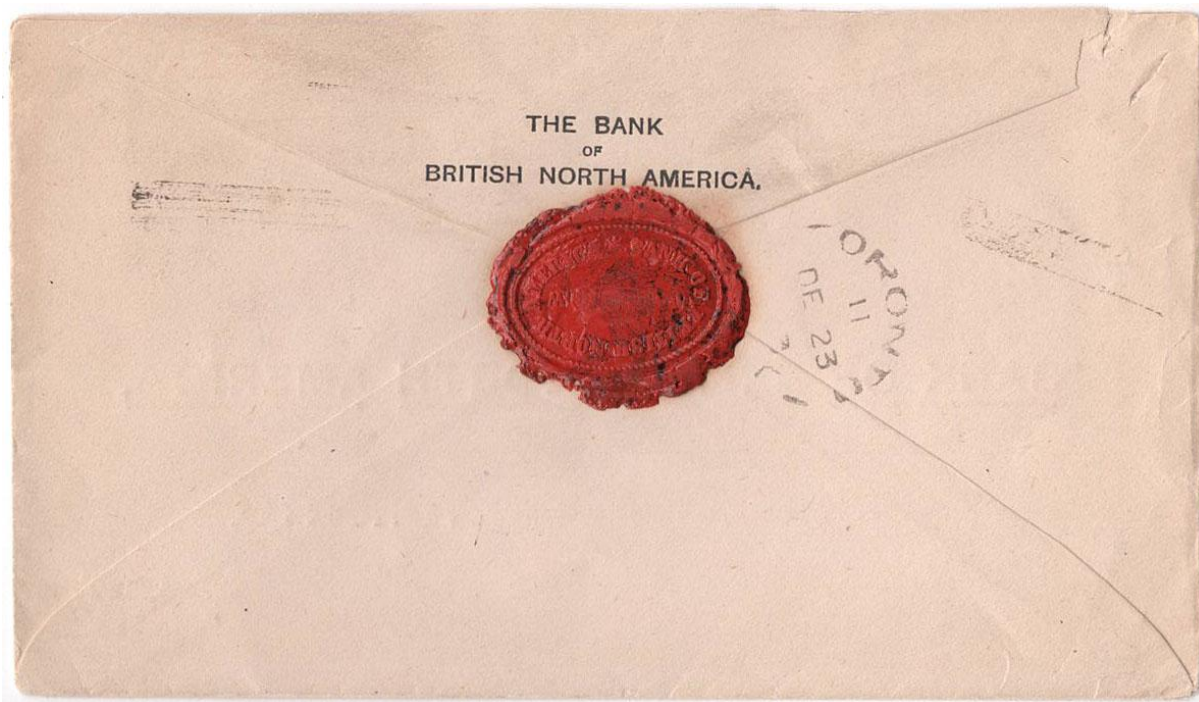




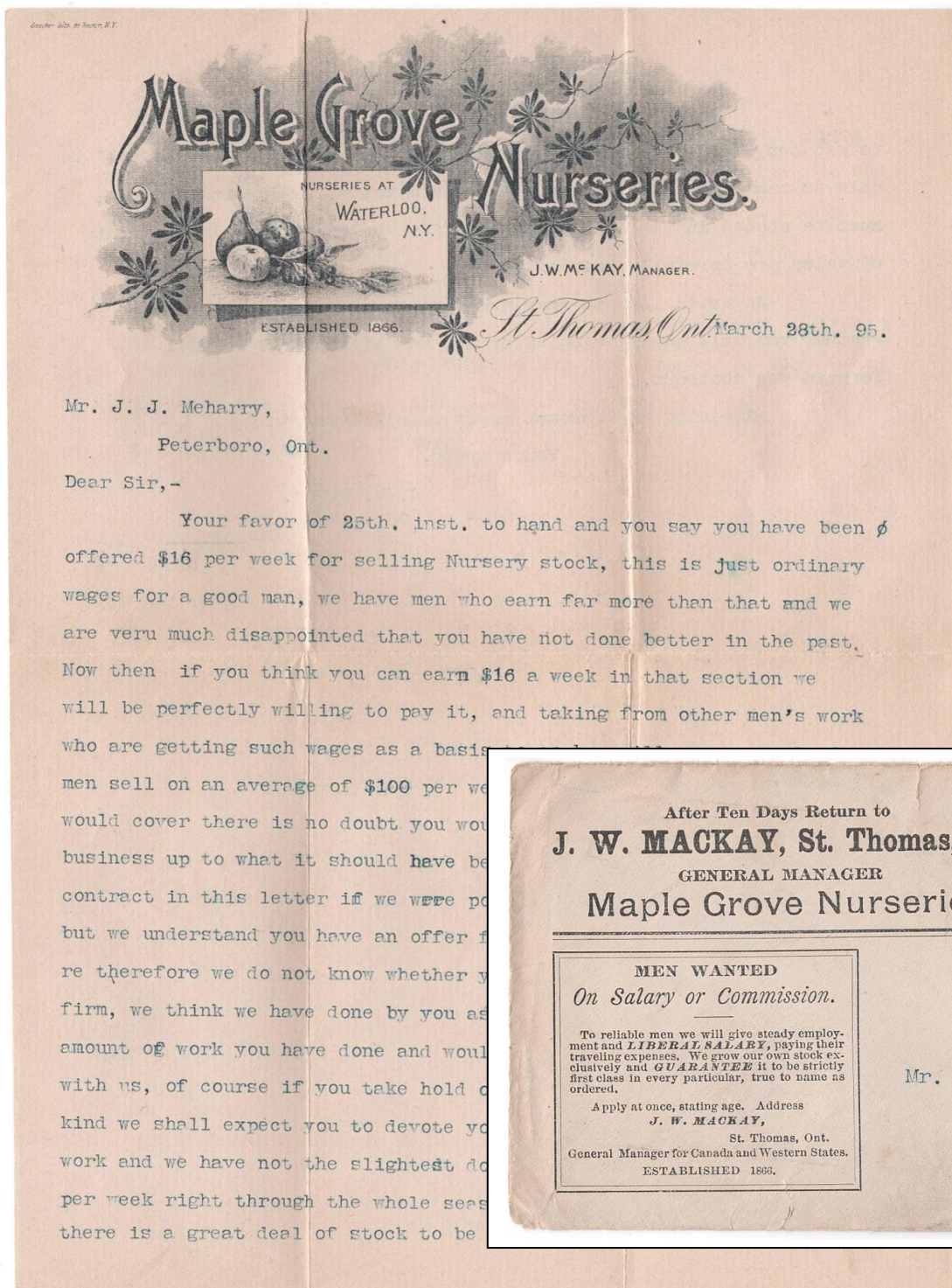
Item 688-26 – **Superb Toronto squared circle** – 1896, 2¢ UPU stationery card P4 from Toronto with a superb squared-circle strike dated 7PM MR 14 96, paying 2¢ UPU postcard rate to Germany (receiver on front). Hard to find nicer. \$75.00



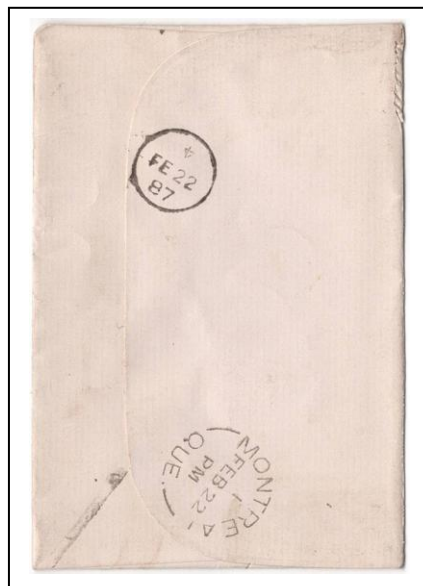
Item 688-27 – **2¢ adjacent post office rate (Le Breton Flats)** – 1897, 2¢ SQ tied by Le Breton Flats Ont cds on Vulcan Iron Works illustrated advertising cover paying 2¢ adjacent-post-office rate to Ottawa (b/s). I've seen adjacent-office usages from New Edinburgh, Hintonburg and Hull Que, but this is the first Le Breton Flats example I've ever had. Very scarce. \$400.00



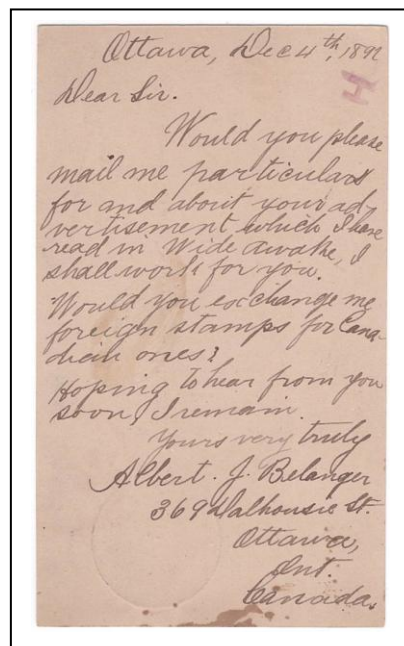
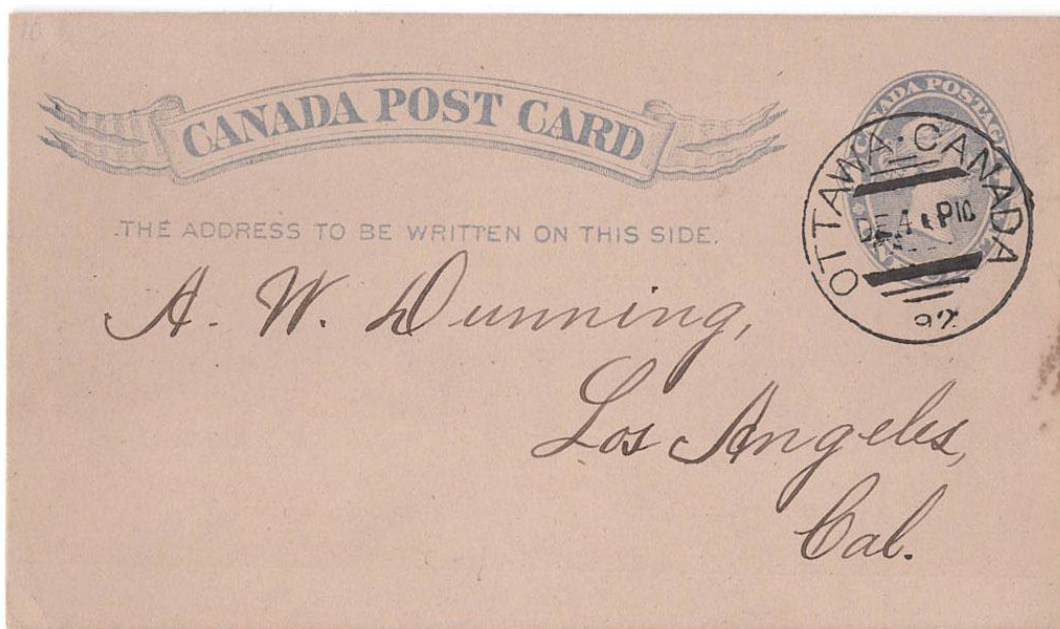
Item 688-28 – **Bank of British North America wax seal** – 1895, 3¢ SQ pair tied by London Ont squared circle on printed from and to Bank of British North America, paying 6¢ double-weight letter rate to Toronto (b/s). Reverse with attractive Bank of BNA wax seal. \$50.00



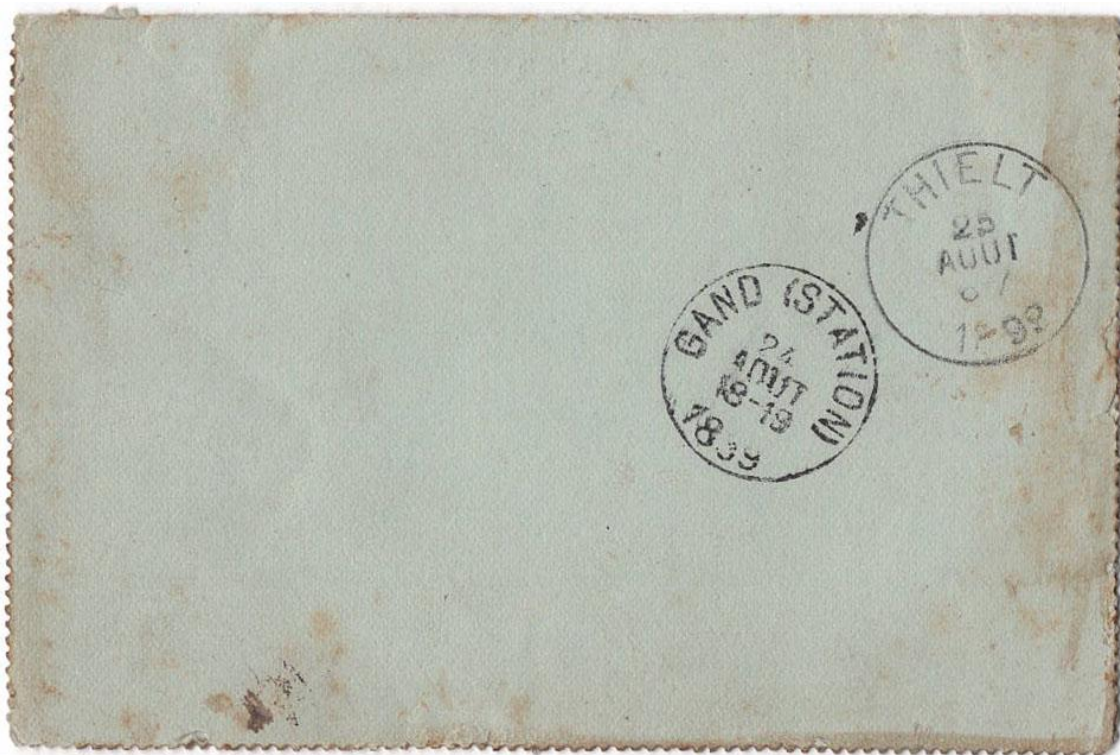
Item 688-29 – **St. Thomas Maple Grove Nurseries** – 1895, 3c SQ tied by St. Thomas Ont squared circle on J.W. Mackay and Maple Grove Nurseries advertising cover, paying 3c letter rate to Peterboro (b/s). The enclosed letter, on striking fruit-themed letterhead printed with dual locations: St. Thomas and Waterloo, New York, is addressed to J.J. Meharry. Mackay responds to Meharry's inquiry about a \$16/week nursery stock sales offer, noting this as typical wages for a competent agent, though others in the firm earn up to \$100/week. He expresses disappointment in Meharry's past results but remains open to retaining him if he commits fully, citing strong sales potential in Peterboro. Mackay invites confirmation before sending a contract, aware that Meharry may be considering another offer. \$125.00



Item 688-30 – **Brome CE** – 1887, 3¢ SQ tied by faint concentric-ring cancel on lady cover from Brome CE paying 3¢ letter rate to Montreal (b/s). \$25.00



Item 688-31 – **Ottawa stamp collector to California** – 1892, 1¢ stationery card from an Ottawa stamp collector, mailed from Ottawa with a perfect Ottawa Canada Barred Circle postmark dated DE 4 P10 92, paying 1¢ postcard rate to Los Angeles, California. \$50.00



Item 688-32 – Lettercard, Lethbridge to Belgium – 1899, ½¢ Leaf, ½¢ Numeral and 2¢ Provisional tied by Lethbridge Alta squared circle on 2¢ on 3¢ lettercard (Webb L12a, setting 2, perforation A) paying 5¢ UPU letter rate to Belgium (b/s). Some stain spots. Territorial era. \$300.00



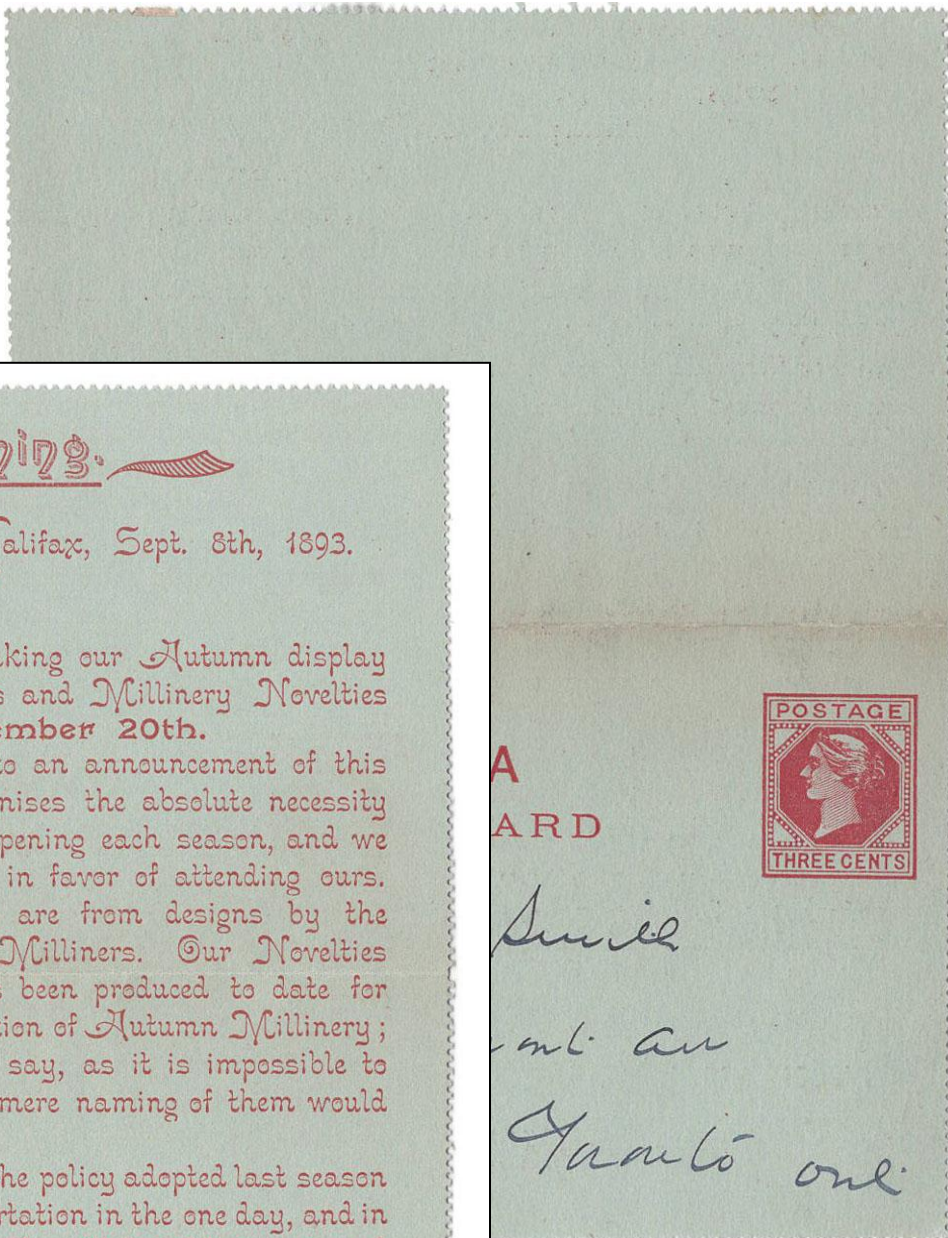
Item 688-33 – Lettercard, Tichborne Ont to Hong Kong – 1902, 2¢ on 3¢ lettercard (Webb L16) mailed from Tichborne Ont, Frontenac County, paying 2¢ empire letter rate to Hong Kong (b/s) via Kingston and Vancouver (both b/s). \$250.00



Item 688-34 – **Lettercard, Halifax to Grand Turk, Turks and Caicos Islands** – 1900, 2¢ on 3¢ lettercard (Webb L16) mailed from Halifax NS, paying 2¢ Empire letter rate to Grand Turk, Turks & Caicos Islands (receiver on front). \$250.00



Item 688-35 – **Lettercard, 5¢ UPU to Argentina** – 1900, 1¢ and 2¢ Numeral tied by Montreal machine cancel on 2¢ on 3¢ lettercard (Webb L16) paying 5¢ UPU letter rate to Argentina. \$150.00



Millinery Opening.

Halifax, Sept. 8th, 1893.

Dear _____

We intend making our Autumn display of Pattern Bonnets, Hats and Millinery Novelties on **Wednesday, September 20th.**

Little need be added to an announcement of this kind, every Milliner recognises the absolute necessity of attending at least one opening each season, and we trust your decision will be in favor of attending ours.

Our Trimmed Goods are from designs by the most celebrated Parisian Milliners. Our Novelties include everything that has been produced to date for the trimming or ornamentation of Autumn Millinery; more than this we cannot say, as it is impossible to describe the goods and the mere naming of them would be of little value.

We intend to continue the policy adopted last season of closing out the whole importation in the one day, and in order to do so, Trimmed Goods will be sold at cost, and you are sure to get some cheap lines of novelties.

Trusting you will embrace this opportunity of adding the necessary "finishing touches" to your Autumn selections, we remain,

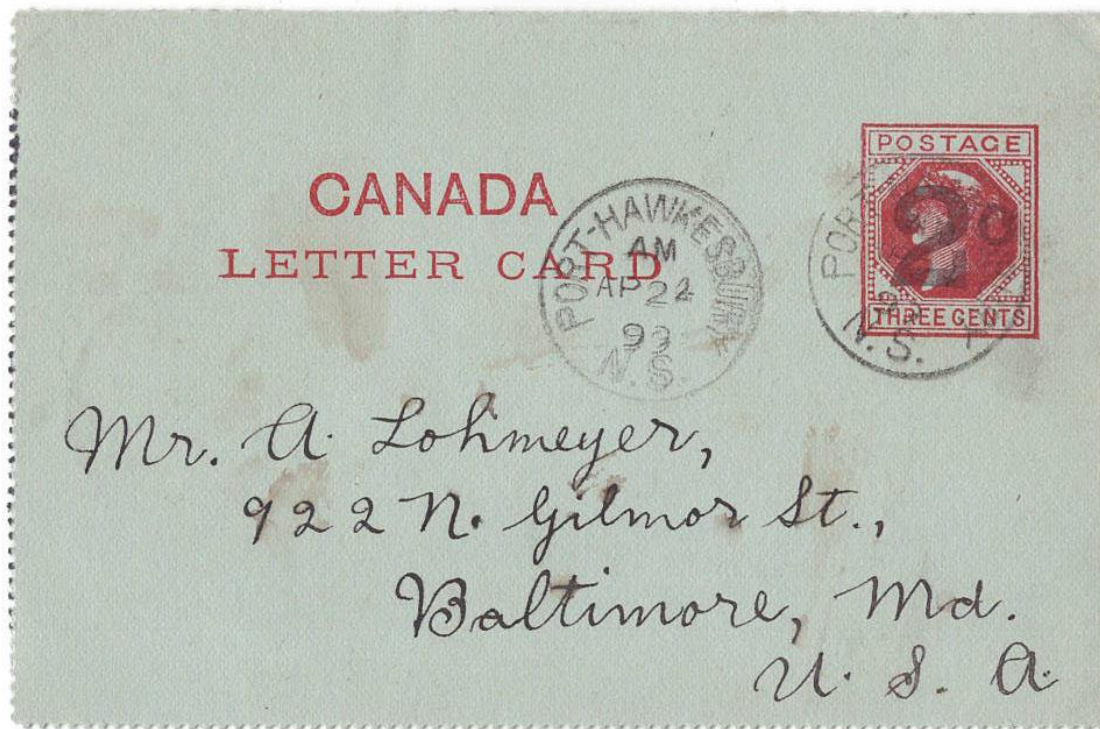
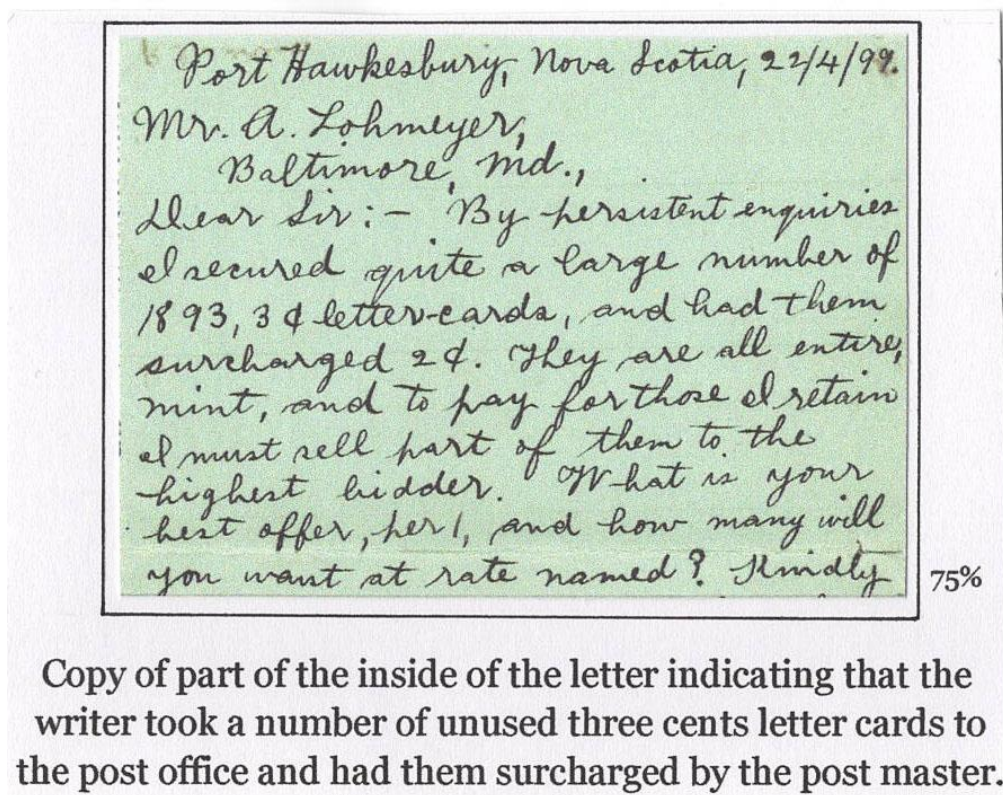
Yours very truly,

SMITH BROS.

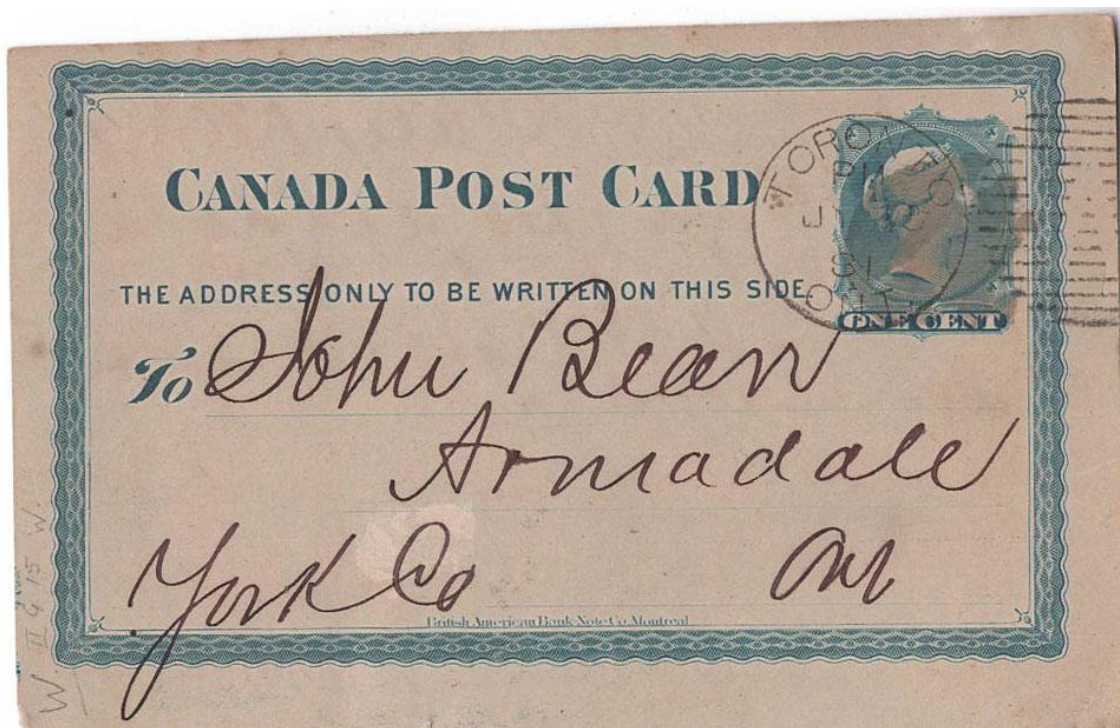
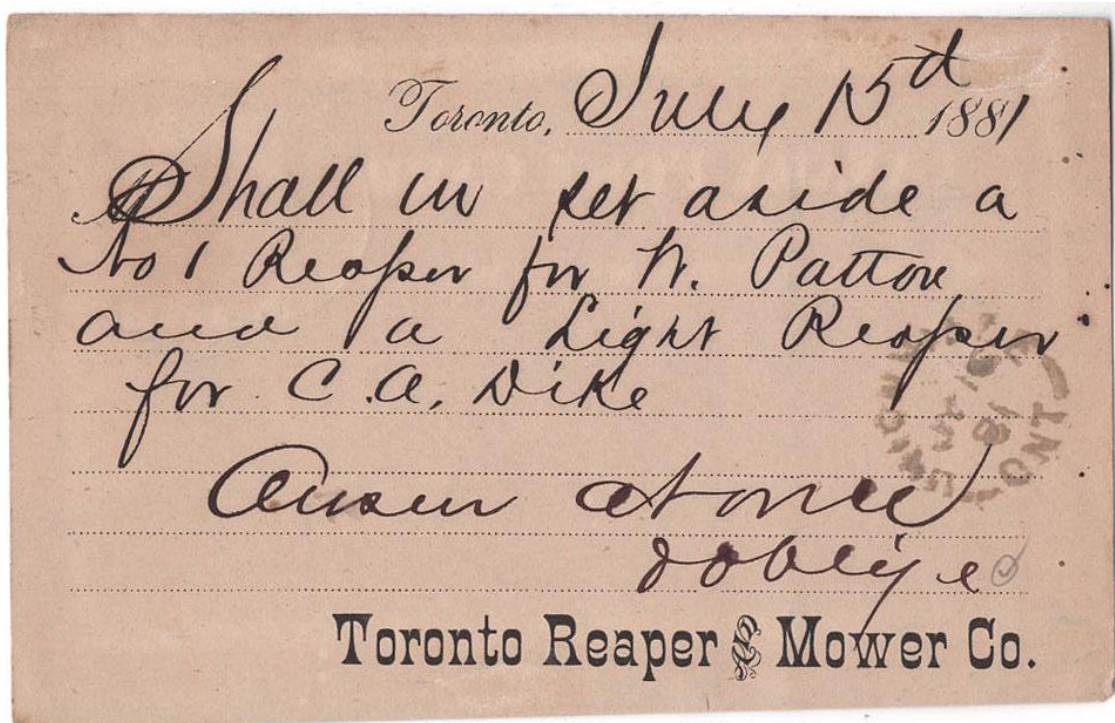
Wholesale Dry Goods & Millinery,
GRANVILLE & DUKE STS., HALIFAX.

WAREHOUSE OPENS AT 8.45.

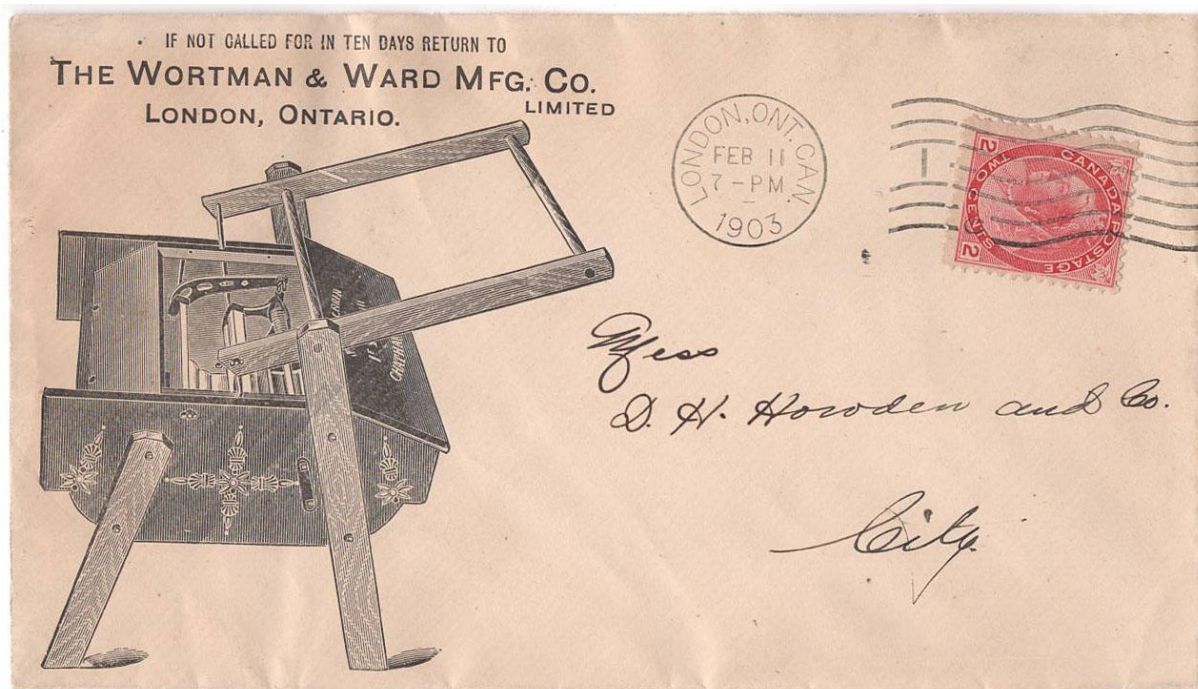
Item 688-36 – **Lettercard to advertise** – 1893, 3¢ lettercard (Webb L1) from Halifax to Toronto, setting 1, perforation A, with Smith Brothers Milliners advertising. Written but unposted, no postal markings. A neat use of the lettercard as an advertising medium, here promoting their autumn display. Seldom seen. \$100.00



Item 688-37 – Interesting content about Post Office lettercard surcharge – 1899, 2¢ on 3¢ lettercard (Webb L12a, setting 2, perforation A) mailed from Port Hawkesbury N.S., paying 2¢ letter rate to Baltimore (b/s). Interesting content: writer brought unused 3¢ lettercards to the Post Office and had them surcharged by the Postmaster. Raises a few questions. \$100.00



Item 688-38 – **Unofficial Toronto intaglio "N" duplex** – 1881, 1¢ stationery postcard mailed from Toronto with the unofficial intaglio "N" duplex cancel, DUN-145 or DON-1841A, to Armadale. Addressed to John Beare from the Toronto Reaper & Mower Co. \$150.00



Item 688-39 – **London Wortman & Ward advertising** – 1903, 2¢ Numeral tied by London International machine cancel on Wortman & Ward Mfg Co. advertising cover paying 2¢ drop letter rate. Wortman & Ward was established in London, by W.H. Wortman & Frank Ward in 1882. The company was located on the south-west corner of York and William Streets, where it manufactured water pumps and agricultural implements. \$75.00



Item 688-40 – **Toronto Nordheimer Piano & Music Co.**- 1900, 2¢ Numeral tied by Toronto Bickerdike machine cancel on Nordheimer Piano & Music Co. advertising cover, paying 2¢ letter rate to St. Catharines (b/s). \$25.00

Related To First Mayor, Miss Edith Ferrie Dies

Miss Edith Ewing Ferrie, whose great - uncle was the city's first mayor, was buried this afternoon.

Miss Ferrie, 76, died Thursday. She lived at 148 Bay Street South for 67 years.

Her great-uncle, Colin C. Ferrie, was the city's first mayor in 1846.

She was the daughter of the late Campbell Ferrie and Mrs. Ferrie, the former Maud Glasco.

SERVICE was at 311 Bay Street South, the residence of Gordon C. Ferrie, her brother.

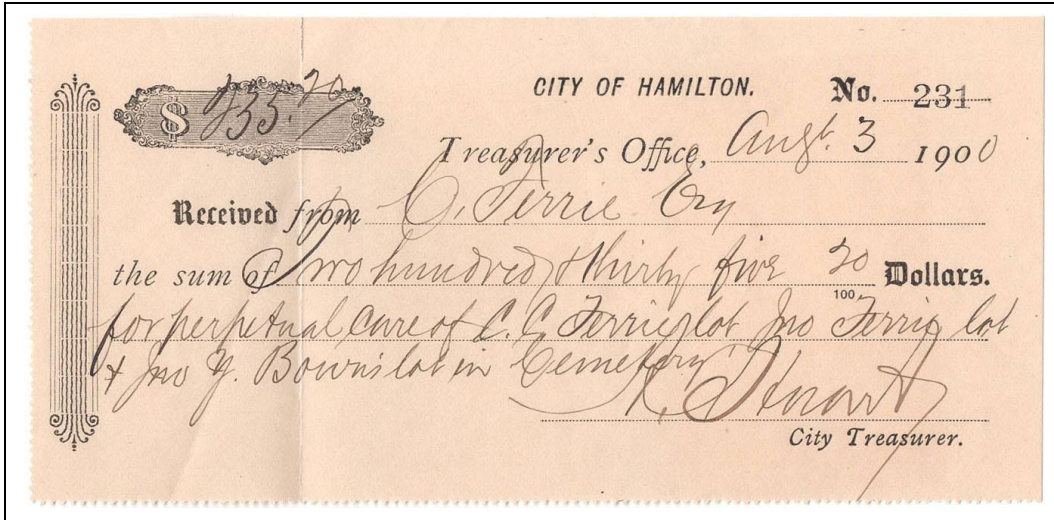
Miss Ferrie was active in many organizations, particularly the Society for the Prevention of Cruelty to Animals, and the Aged Women's Home.

She was a life member of MacNab Street Presbyterian Church and served in the Women's Missionary Society.

Miss Ferrie was also a member of the Wentworth Historical Society.

Interment was in Hamilton Cemetery.

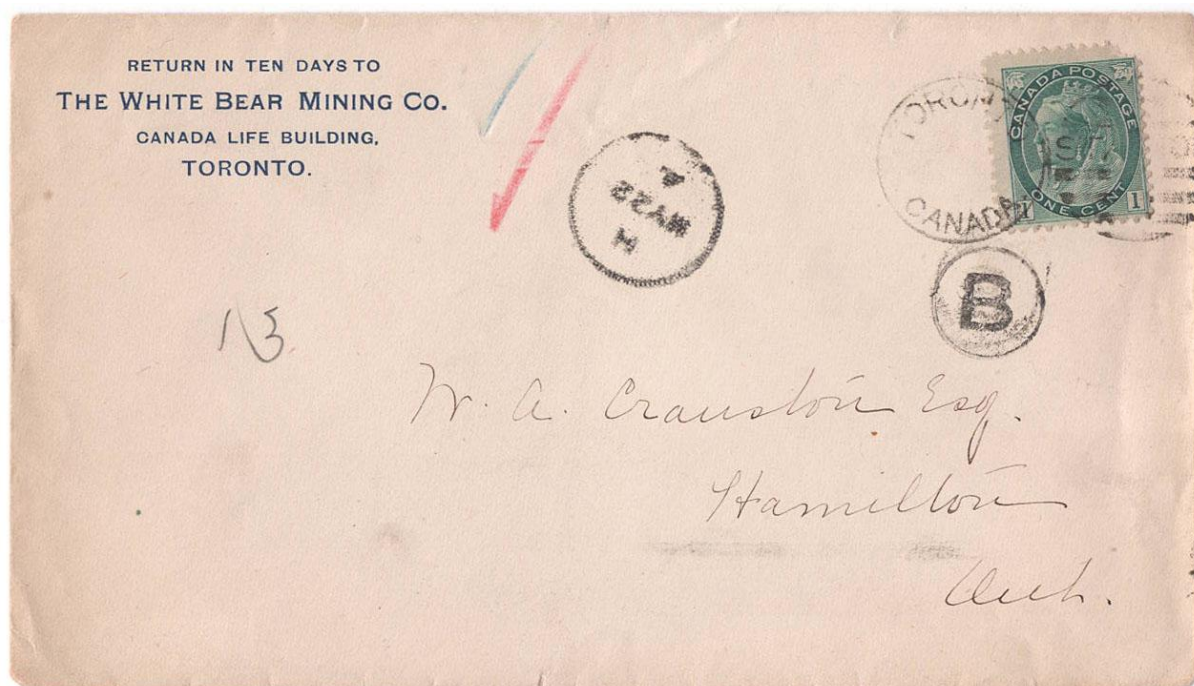
March 13, 1963
"Spec"



Item 688-41 – **Hamilton Ferrie family cover and cemetery receipt** – 1900, 2¢ Numeral tied by Hamilton Bickerdike machine cancel on City Treasurer's Office illustrated City Hall cover, paying 2¢ drop letter rate. Enclosed: newspaper clipping regarding Edith Ferrie's funeral and a receipt for \$235 for her cemetery lot. \$50.00



Item 688-42 – **Toronto Iroquois Hotel** – 1902, 2¢ Numeral tied by Toronto machine cancel on The Iroquois Hotel advertising cover, paying 2¢ drop letter rate. \$50.00



Item 688-43 – **Toronto Station B 3rd class duplex use** – 1901, 1¢ Numeral (UR corner fault) tied by Toronto Station B 3rd-class duplex cancel (DON-1735B; five examples recorded, 1901–1902) on mining company unsealed cover paying 1¢ printed-matter rate to Hamilton (b/s). Delivered by letter carrier, with Hamilton cds H MY 22 4 and carrier circular “B”. A scarce 3rd-class usage with a rare Toronto duplex. \$200.00

FORM C.
ISSUED BY THE REGISTRAR-GENERAL OF ONTARIO.

By order of the Postmaster-General.
FREE

County Middlesex Div. W. Williams

Name and Sex Viola Holmes

Date of Death Nov. 3rd

Age 1 1/2 years

Residence Street or Concession. 21st Cor. W. Williams

Occupation Farmer's daughter

Where Born W. Williams

Cause of Death and length of illness Convulsions, 14 hours

Name of Physician Dr. Copeland

Religious Denomination ..

Date of Return Nov. 4th Dr. Copeland
Signature of person making return

Neglect on the part of any parent, householder or physician to comply with the Act relating to Births, Marriages and Deaths is subject to a penalty of \$10.00. (Secs. 21-22, 58 Vict., cap. 17.)

Wm Dawson
Division Registrar.
Sylvan P.O.,
ONTARIO,
CANADA.

SYLVAN ONT.
ARKONA ONT.

Item 688-44 – Return of death to Sylvan Ont (Middlesex) – 1896, Registrar-General of Ontario Return of Death card, free-franked, mailed from Arkona to Sylvan via Thetford. Reports the death of a 1½-year-old girl, signed by the physician on duty, Dr. Copeland. Sylvan a difficult Middlesex office, closed 1914. \$50.00 **SOLD**

FORM A.
 ISSUED BY REGISTRAR-GENERAL OF ONTARIO.
RETURN OF BIRTH.
 County *Middlesex* Div. *Westminster*

By Order of the Postmaster-General.
FREE.

Name	<i>Don't know - not named yet</i>
Sex and Date of Birth...	<i>Female twins - Sunday - June 7th 96</i>
Name of Father ..	<i>Archibald D. Taylor</i>
Maiden Name of Mother	<i>Don't know - the Parents report will tell</i>
Occupation of Father ..	<i>Labourer</i>
Physician in Attendance	<i>D. J. A. Meldrum</i>
Remarks	<i>The Division Registrar will kindly note that this is the Physician's report of a birth. that he is not supposed to make the child's name or mother's name</i>
Date of Return <i>11th June 96</i>	Signature of person making return. <i>D. J. A. Meldrum</i>

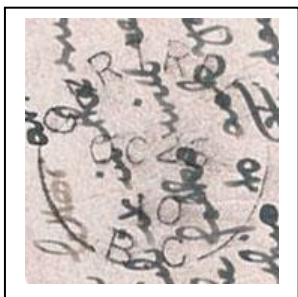
§ 17. Neglect on the part of any parent, householder or physician to comply with the Act Relating to Births, Marriages and Deaths, is subject to a penalty of \$10.00. (Secs. 15-16, 59 Vict., cap. 17.)

BELMONT
 JUN 15 1896
 ONT.

Henry Anderson Esq
 Division Registrar.
Hubrey P.O.,
 ONTARIO,
 CANADA.

HUBREY
 JUN 15 1896

Item 688-45 – **Return of birth to Hubrey Ont (Middlesex)** – 1896, Registrar-General of Ontario Return of Birth card, free-franked, mailed from Belmont to Hubrey. Reports the birth of a girl, with the note Name: “don’t know, not named yet”, signed by the attending physician. Hubrey another difficult Middlesex office, closed 1913. \$50.00 **SOLD**



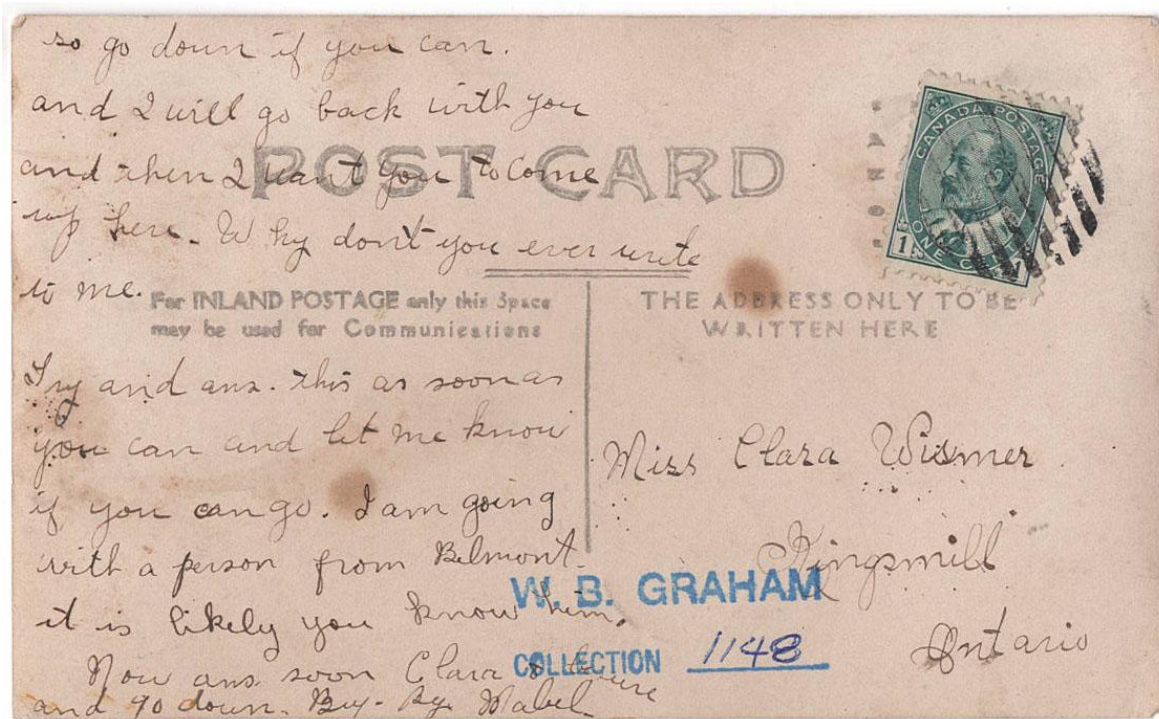
Item 688-46 – **Gartrell BC RF E, Winnipeg and Vancouver DLO** – 1910, Carnegie Library postcard mailed unpaid from Winnipeg to Summerland BC, returned for postage via Winnipeg Branch DLO; forwarded to Vancouver DLO, where 1c Edward added, then sent on to Summerland via Gartrell (1910–1913, RF E). A pretty double-oval Dead Letter Office markings, including a rare British Columbia RF E strike. \$200.00



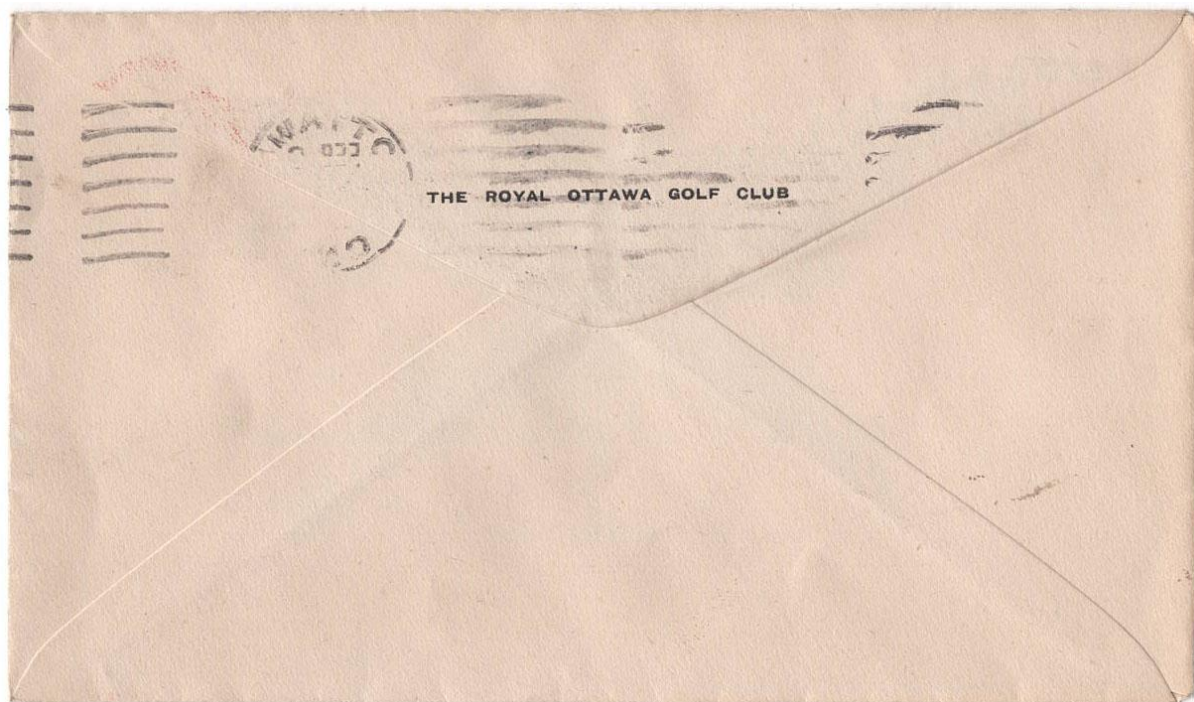
Item 688-47 – Hamilton wheel company – 1904, 2¢ Edward tied by Hamilton machine cancel on Canadian Corundum Wheel Co. illustrated advertising cover paying 2¢ letter rate to Moncton (b/s). Light foxing at upper right. \$25.00



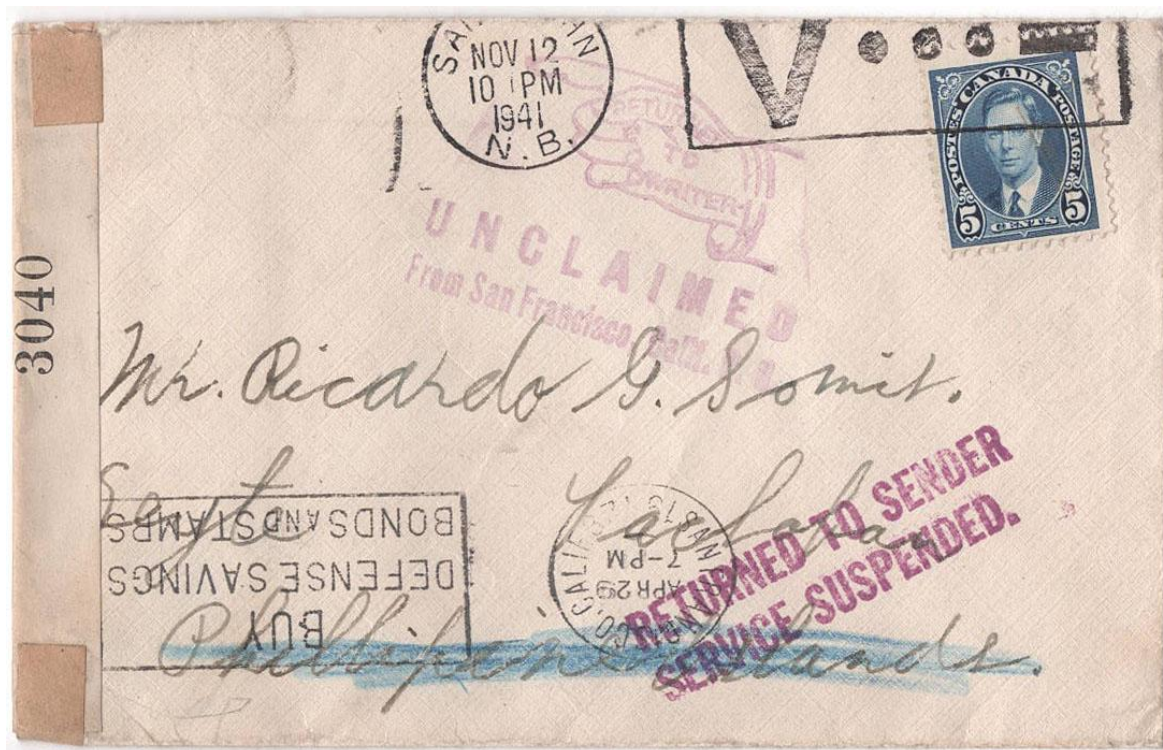
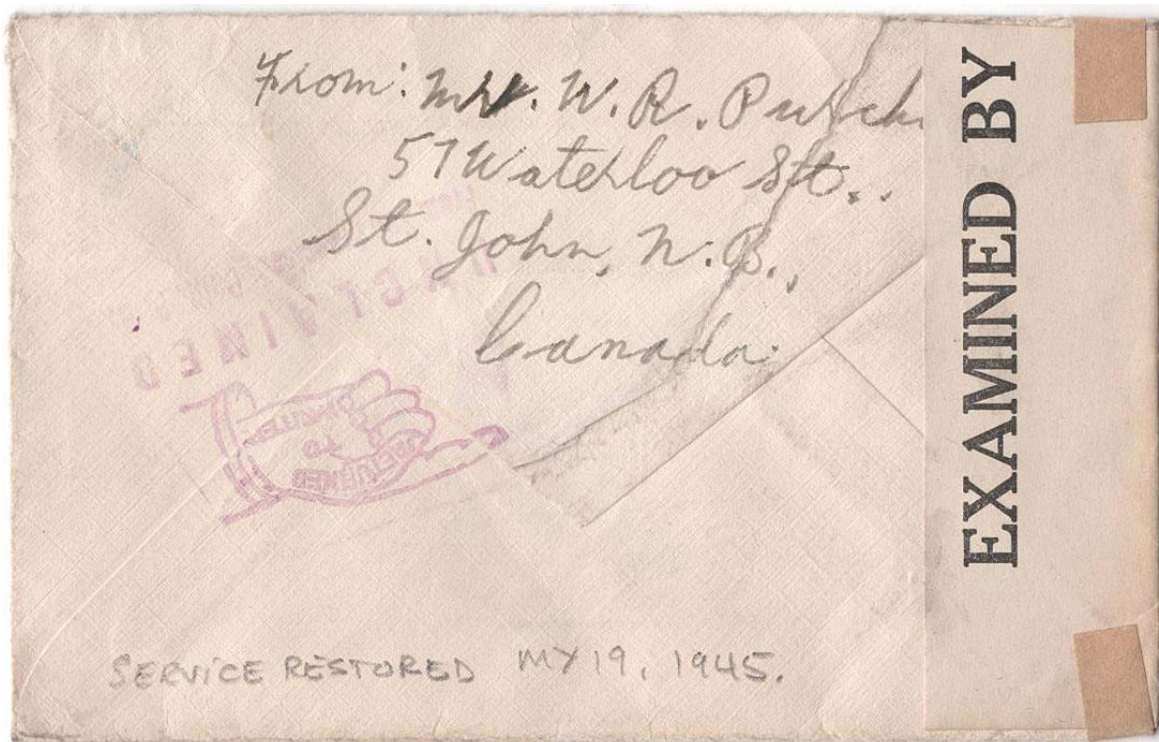
Item 688-48 – Regina, 2¢ Second Issue Postage Due – 1934, T. Eaton Co. window cover mailed unpaid at Regina, showing a clean free strike of the COD slogan cancel, to local address. Rated 4¢ for double deficiency of the drop-letter rate, handled through General Delivery and paid with pair of 2¢ Second Issue Postage Due J7. \$50.00



Item 688-49 – **Frome Ont Post Office RPPC (Elgin)** – c.1908–09, 1c Edward tied by grid cancel on Frome, Ontario General Merchant and Post Office real-photo postcard paying 1c postcard rate to Kingsmill. Sharp view of the Albert E. Ashbury storefront: owner and Postmaster with two children, figure behind small wooden fence, two-horse carriage with driver, Salada Tea sign, bicycle, and other period details. \$150.00



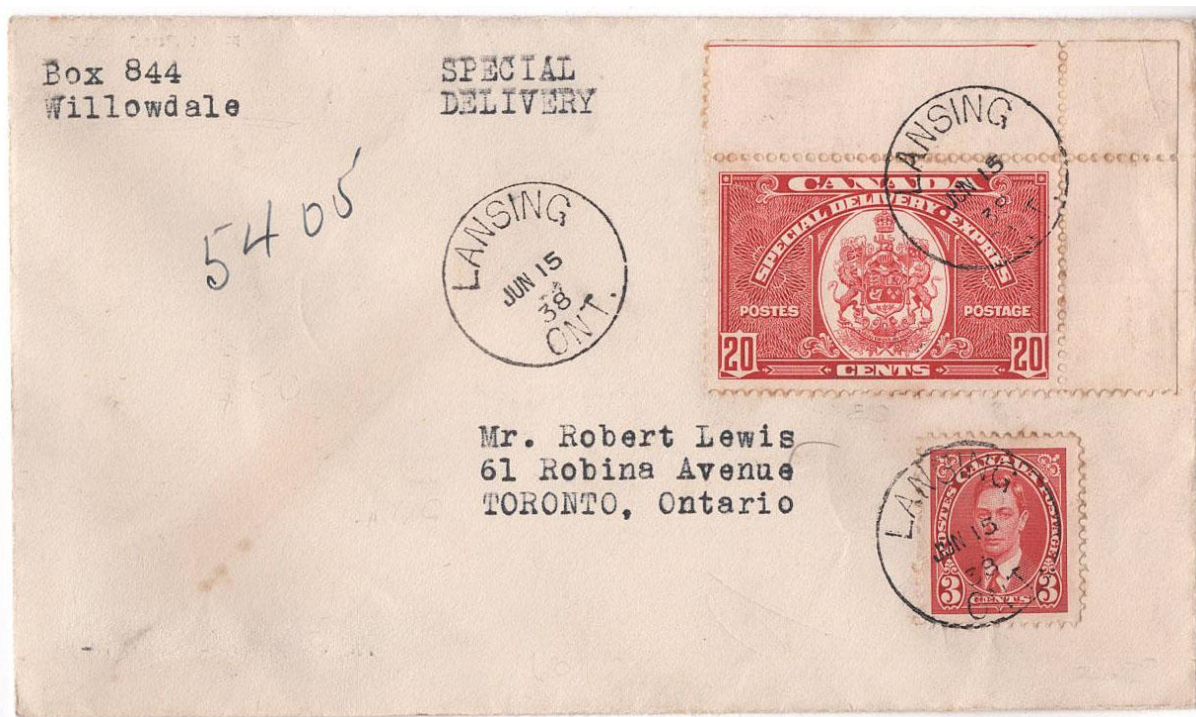
Item 688-50 – Ottawa Golf club redirected with Free machine – 1920, 2¢ postal stationery envelope mailed from Ottawa, reverse with Royal Ottawa Golf Club c/c, to the Marine Department. Redirected locally and passed through the Ottawa Free machine the following day. \$25.00



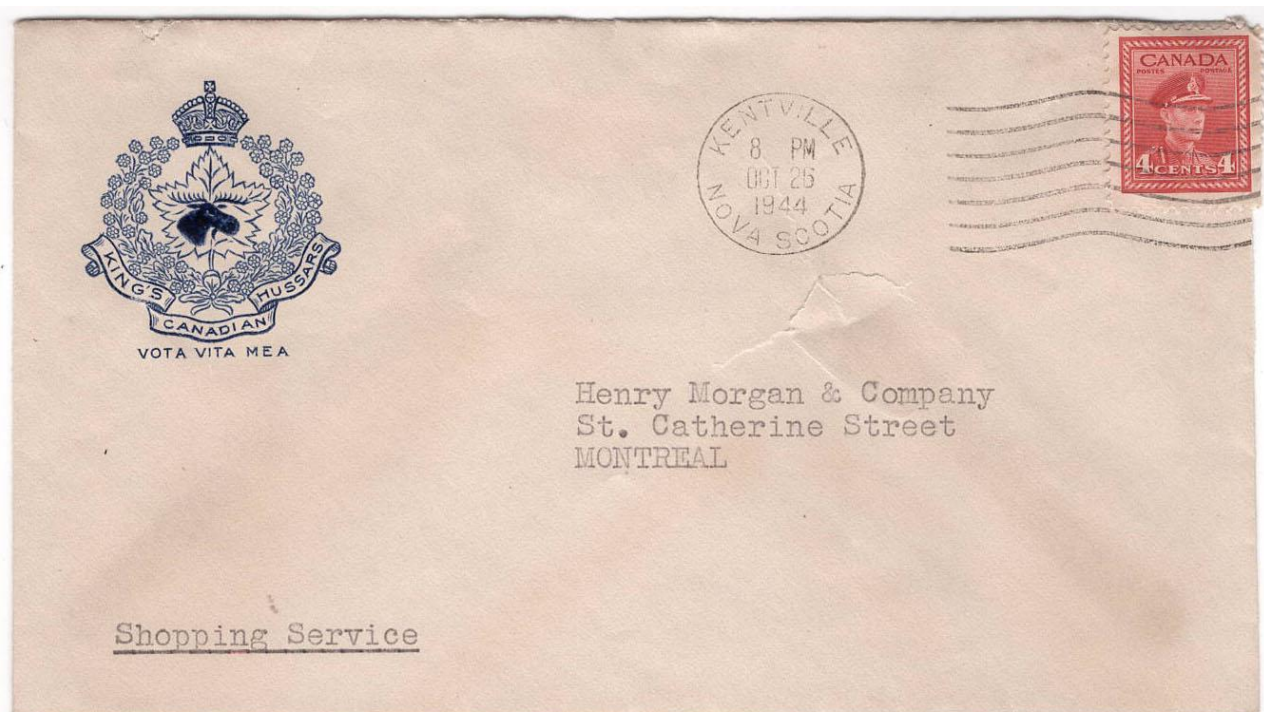
Item 688-51 – **St. John NB to Philippines Islands, service suspended** – 1941, 5c Mufti tied by St. John V...- slogan cancel on censored cover paying 5c UPU letter rate to Philippine Islands. Routed via San Francisco and struck with American auxiliary handstamp *Returned to Sender / Service Suspended*. Returned to origin using pointing-finger Unclaimed marking outside the Canadian DLO establishment. Service restored MY 19 45. \$200.00



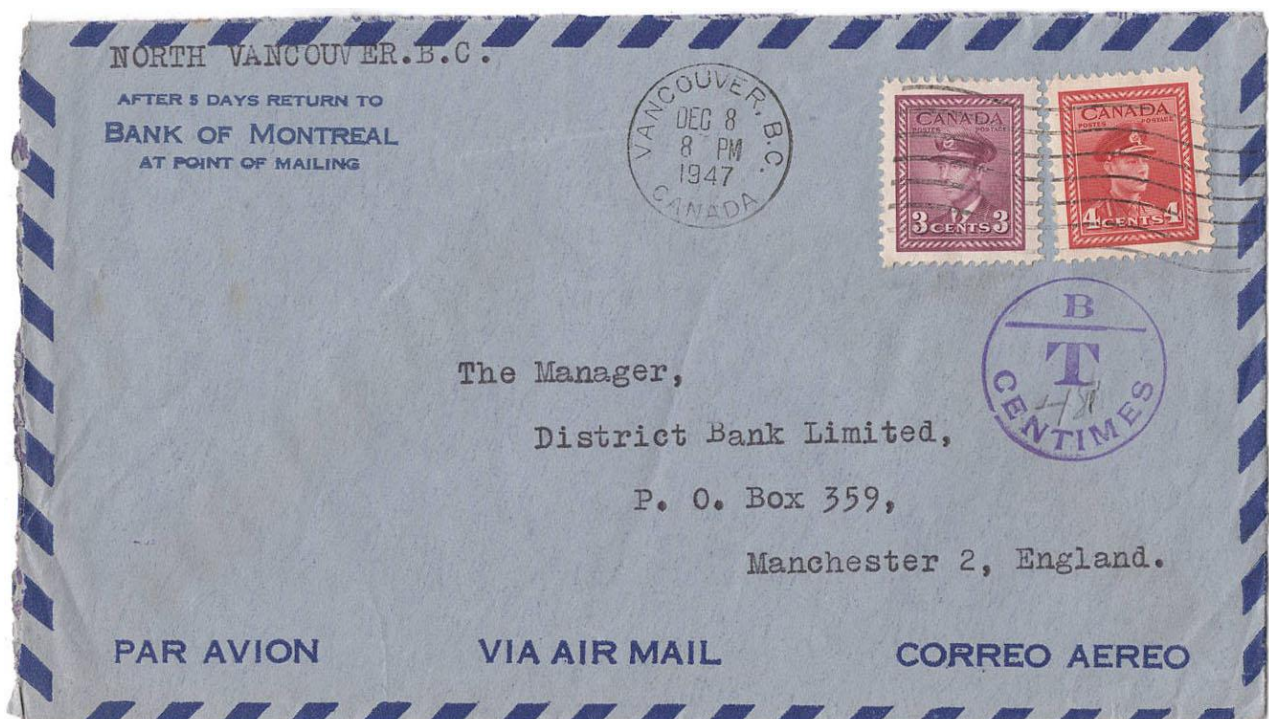
Item 688-52 – **St. Valerien de Rimouski PQ MOOD** – 1939, 1¢ Mufti tied by St. Valérien-de-Rimouski PQ MOOD cancel, with a free strike, paying 1¢ printed-matter rate to Toronto. \$25.00



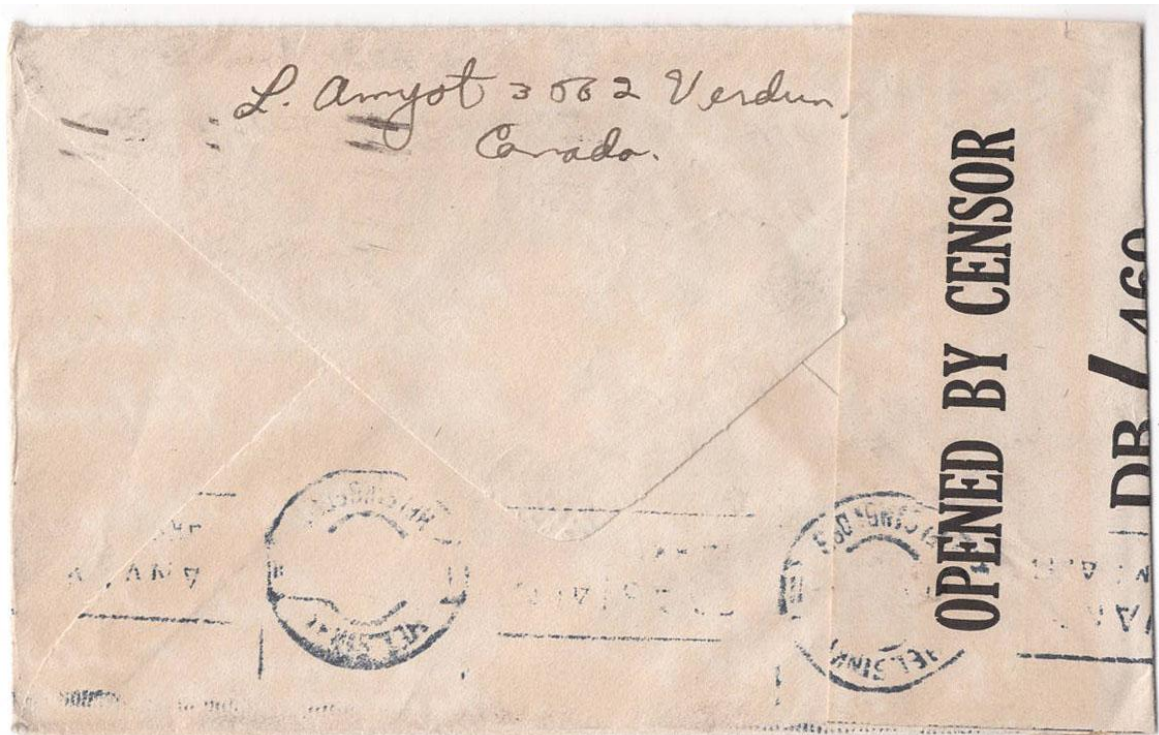
Item 688-53 – **E8 first day cover** – 1938, 3¢ Mufti and 20¢ Special Delivery E8 tied by Lansing Ont cds, first day JU 15 38, on cover paying 23¢ special-delivery letter rate to Toronto (b/s). E8 in-period usages (JU 15 38 to MR 1 39) are generally difficult and under-catalogued; for the incoming new rate the 10¢ E9 followed less than a year later on MR 1 39. Technically an in-period E8 cover, but still a tough first-day usage. \$125.00



Item 688-54 – **Kentville NS King's Canadian Hussars** – 1944, 4¢ War tied by Kentville NS machine cancel on King's Canadian Hussars embossed blazon c/c, moose illustrated, paying 4¢ letter rate to Montreal. Tear through front beneath the postmark. \$25.00



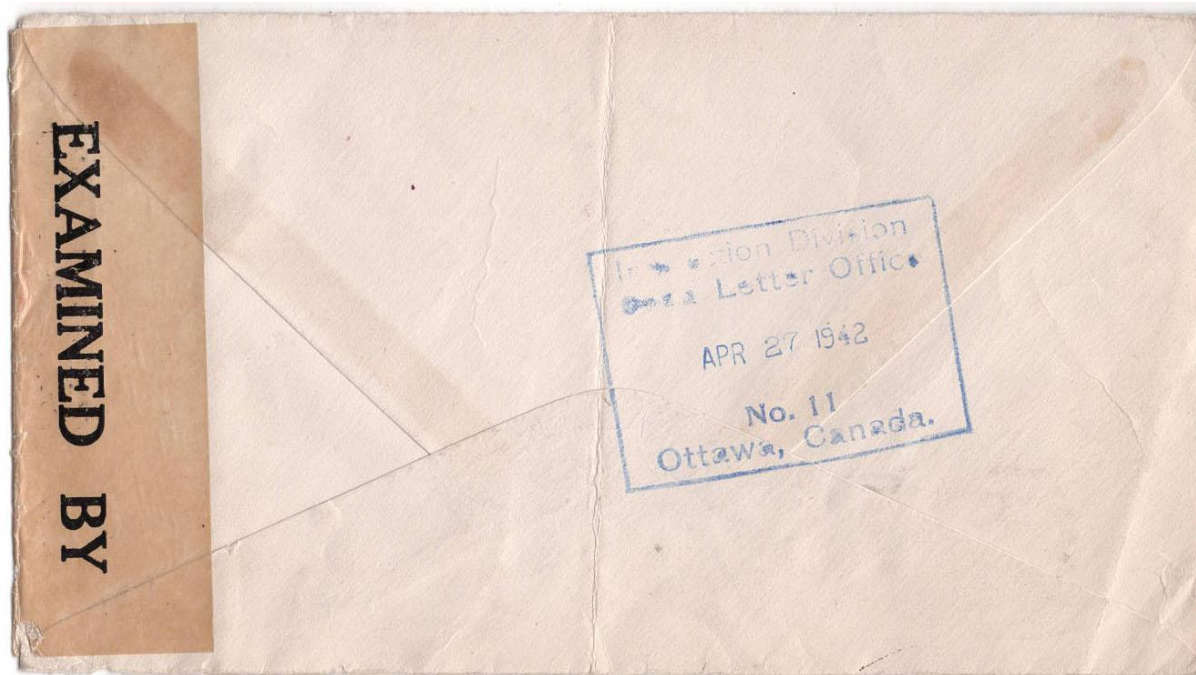
Item 688-55 – **15¢ airmail to England, taxed 48 centimes** – 1947, 3¢ and 4¢ War tied by Vancouver machine cancel on Bank of Montreal cover underpaying 15¢ airmail letter rate to England. T48 centimes applied, representing a large 8¢ shortage, more than half the rate, double deficiency multiplied by 3 UPU centimes = 48. \$25.00



Item 688-56 – **10¢ double wgt UPU to Finland, taxed 60 centimes** - 1945, 4¢ War tied by Montreal machine cancel on censored cover underpaying 10¢ double-weight UPU surface letter rate to Finland (b/s). Taxed 60 centimes, representing 6¢ shortage, double deficiency multiplied by 5 UPU centimes = 60. \$50.00



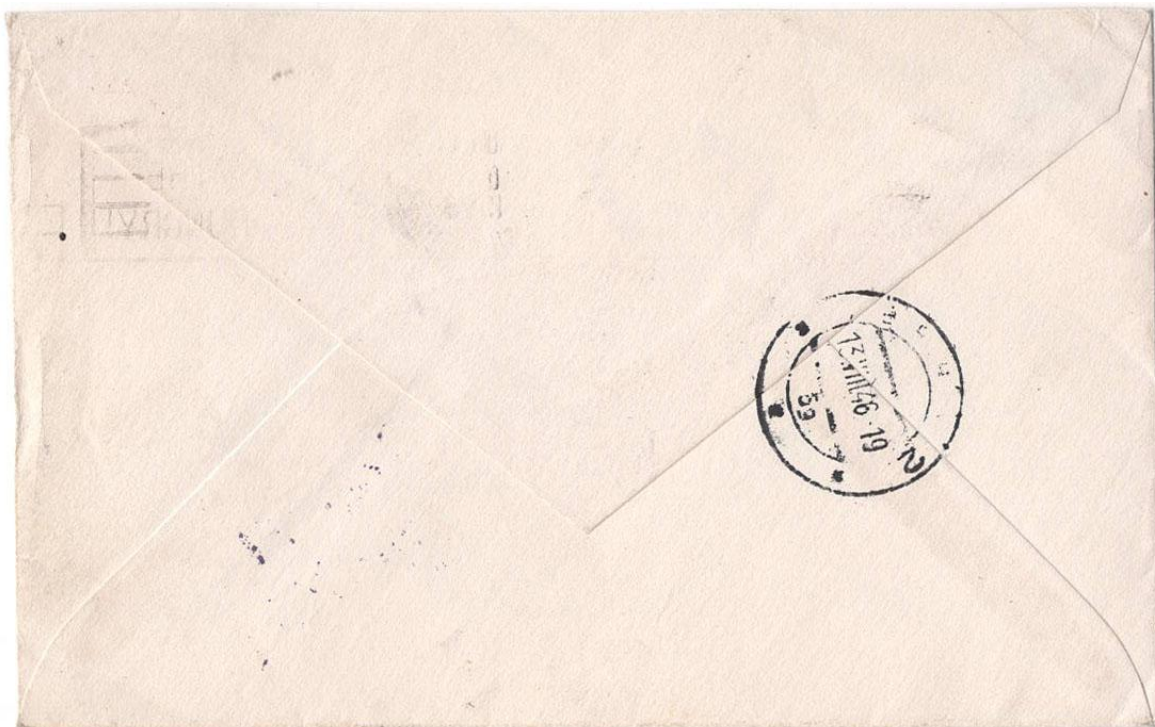
Item 688-57 – **Special delivery to 1st Canadian Parachute Battalion** – 1943, 2¢ Royal Visit (2) and 10¢ Special Delivery E9 tied by Ottawa cds on cover paying 14¢ special-delivery letter rate to Montreal. Addressed to Capt. Smith, 1st Canadian Parachute Battalion, at the Mount Royal Hotel, downtown Montreal. The connection between Montreal and the 1st Canadian Parachute Battalion is highlighted by recruitment efforts, the diverse bilingual composition of the unit, and the massive welcoming home parades. Many soldiers from the area, including bilingual Francophones, served in the battalion, and the city later hosted celebratory parades for returning heroes. \$75.00 **SOLD**



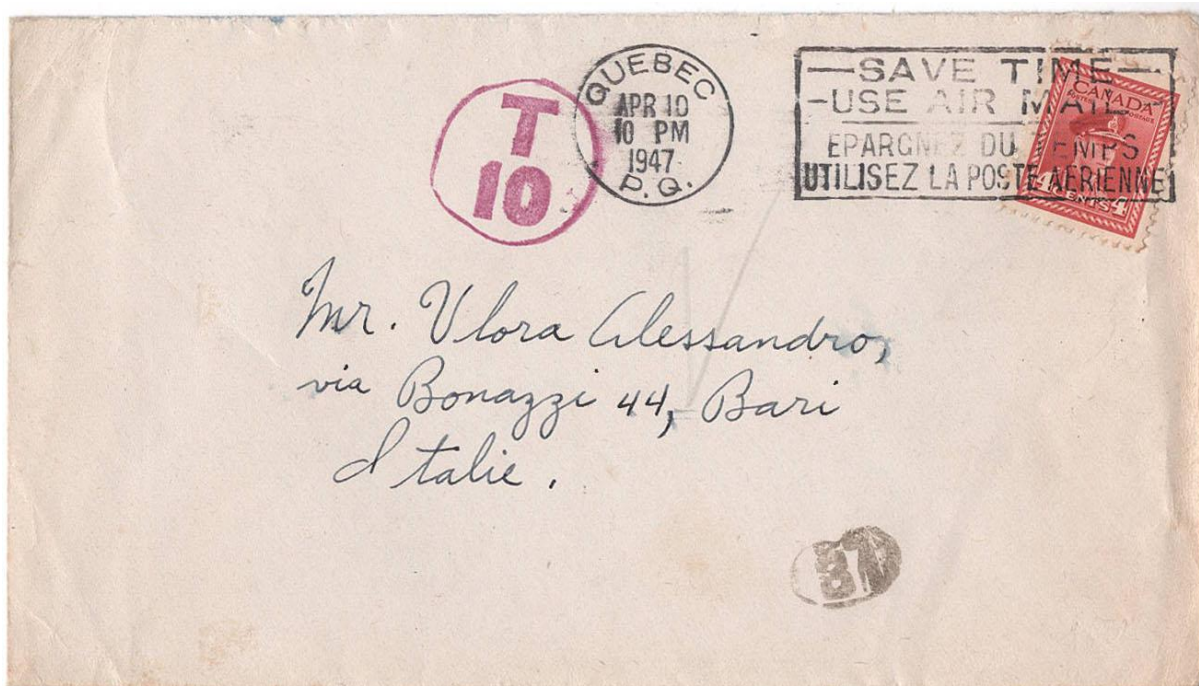
Item 688-58 – **Kindersley Sask underpaid surface rate to Hong Kong, suspended** – 1941, 6¢ Airmail C6 tied by Kindersley Sask duplex on banking censored cover, sent by surface for Australia, China or Hong Kong. Partial Vancouver Despatch marking; taxed T30 centimes then scratched out; struck with pointing-finger and returned via Ottawa as Mail Service Suspended. Unusual three-country destination attempt, addressed to a bank with routing left to wartime circumstance. Acquired 25 years ago from the Harry Sutherland C6 collection; now back again. Middle file fold. Ex Harry Sutherland. \$250.00



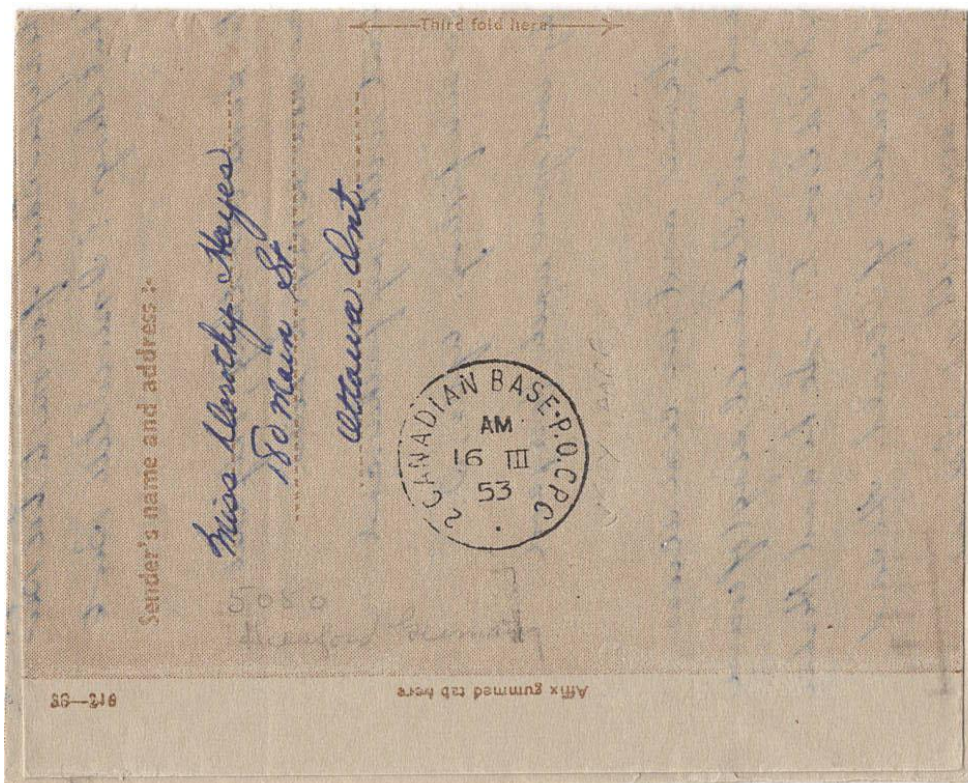
Item 688-59 – Niagara Falls Ont \$1.00 airmail to India – 1943, 50¢ War (2) tied by Niagara Falls Ont duplex on double-censored cover paying \$1.00 airmail letter rate to India (b/s). Canadian censorship without tape, showing DHB/98 (b/s); British censorship in India with PC90 label tied by Crown Passed handstamp. \$150.00 **SOLD**



Item 688-60 – **5¢ UPU surface rate to Czechoslovakia** – 1946, 4¢ War tied by Vancouver machine cancel on cover underpaying 5¢ UPU letter rate to Brno, Czechoslovakia (today in Czechia, South Moravian Region). Taxed T10 centimes representing 1¢ shortage, double deficiency multiplied by 5 = 10. \$25.00 **SOLD**



Item 688-61 – **5¢ UPU surface rate to Italy** – 1947, 4¢ War tied by Quebec machine cancel on cover underpaying 5¢ UPU letter rate to Italy. Taxed T10 centimes representing 1¢ shortage, double deficiency multiplied by 5 = 10. \$25.00 **SOLD**



Item 688-62 – **Base P.O. CPC postmark (Montreal)** – 1953, 5¢ Postes Postage tied by Ottawa Eastern Seals slogan cancel on Forces Letter to 79th Canadian Field Ambulance RCAMC, CAPO 5050, Montreal. Scarce usage owing to the very uncommon Canadian Base P.O. CPC cds backstamp, in use at Montreal 1951–55. \$50.00



Item 688-63 – Two "Épargne de Guerre" unusual foldouts – c.1940, top: Christmas war-savings foldout in French, with interior slots to insert certificates; bottom: Santa in helmet holding war-savings stamp, also in French, foldout with spaces for 16 stamps to obtain a \$5 certificate at the bank or post office. Both unused, designed by Henry Ross and printed by Copp Clark Co. Scarce. \$50.00 **SOLD**



Item 688-64 – **5¢ UPU surface rate to Denmark** – 1945, 1¢ War block of 4 tied by Montreal roller cancel on cover underpaying 5¢ UPU letter rate to Denmark. Taxed T10 centimes representing 1¢ shortage, double deficiency multiplied by 5 = 10. \$25.00



Item 688-65 – **Cornwall Ont – Bulova advertising** – 1960, 5¢ Wilding tied by Cornwall Ont machine cancel on Lanier Jeweller corner card with Bulova advertising, paying 5¢ letter rate to Hamilton. \$25.00



Item 688-66 – **Journal La Patrie May 9, 1937 - In French** – 1937, May 9 Sunday special-edition supplement of La Patrie, a heavily illustrated tabloid-style preview of the coronation of King George VI and Queen Elizabeth, with extensive royal-family coverage and numerous advertisements. Excellent state of preservation for its paper quality and age. \$100.00



Item 688-67 – **The Montreal Standard, May 20, 1939 - In English** – 1939, May 20 issue of The Montreal Standard, the special Royal Welcome Number pictorial edition marking the historic Canadian Tour of King George VI and Queen Elizabeth. Strong cover portrait of the King and Queen, with detailed photo coverage of their arrival in Quebec City. That same weekend the royal party travelled to Ottawa, where Queen Elizabeth laid the cornerstone of the Supreme Court building and King George VI dedicated the National War Memorial. Good condition, some fragility due to paper quality and age. \$75.00


You will be missed Bob!


PLEASE JOIN US FOR A
CELEBRATION
of **LIFE**


HONOURING THE LIFE OF
Bob Vogel

Join us as we remember a remarkable man who lived with kindness, curiosity, and adventure. A lover of nature, a collector of stamps, and someone who found joy in the simple things—especially time on the water.

His spirit will live on in all of us.


 **AUGUST**
15
2026


 **THE CLUBHOUSE**
BIG CEDAR
ORO-MEDONTE, ON


 1:00 PM –
5:00 PM

Come share memories, stories, and laughter as we celebrate his incredible life.

All are welcome.




IN LIEU OF FLOWERS,
CONSIDER SPENDING TIME
IN NATURE OR DOING SOMETHING
THAT BRINGS YOU JOY.



NATIONAL POSTAGE STAMP & COIN SHOW

2026 FALL SHOW: SEPT. 12-13

Hilton Mississauga/Meadowvale,
6750 Mississauga Road, Mississauga, ON

SATURDAY: 10 A.M. TO 5 P.M. | SUNDAY: 10 A.M. TO 3 P.M.
ADMISSION: \$6 | ADMISSION: \$3

WWW.STAMPANDCOINSHOW.COM

BNAPEX 2026 Convention in Valleyfield

Hosted by THE BNAPEX SOCIETY OF CANADA, PHILATELIC SOCIETY OF VALLEYFIELD AND THE PHILATELIC SOCIETY OF QUEBEC

17-18-19-20 SEPTEMBER 2026
Valleyfield, Québec

Celebrating the 50th anniversary of the Montreal Olympic Games, and the 85th anniversary of Valleyfield's reputation, with a 160+ frame BNA exhibition and participation of 23 dealers, BNAPEX Study Group meetings and seminars, Tours of the historic MOCO cotton mill.

- Thursday 17 and Friday 18 Thurs
- Friday night out (bonus)
- Saturday reception & awards banquet
- Admission: \$5 / Day
- Free admission for members attending one of the events

Dealers' opening hours

Friday 10:00 AM – 5:30 PM
Saturday 10:00 AM – 5:30 PM
Sunday 10:00 AM – 3:00 PM

Contact Sebastien Colbe
128 Joseph-Carrière Street, Saint-Joseph-de-Beauce, QC J3B 6B8
sebastien.colbe@gmail.com

Host MOCO Valleyfield
Hotel reservations: (455) 375-1200
Reservations code: 2026BNAPEX

BNAPEX

Eastern Ontario Vintage Paper Show
Brookville, ON

Including postcards, postal history, stamps, books

Saturday, August 29, 2026
9 am - 3 pm

Sponsored By Eastern Ontario Postcard Club
Wall Street United Church - Gym
5 Wall Street, BROCKVILLE, ON

info: savery611@gmail.com 613-345-7598
roybrooks@sympatico.ca 613-213-2389

Eastern Ontario Postcard Club

National Philatelic Exhibition
Exposition Philatélique Nationale

October 17-18, 2026

The Hellenic Community Centre
133 Southdale Rd. West, London, Ontario
Saturday 10-5, Sunday 10-4
Free Admission, free parking, lunch counter.

Hosted by the The London-Middlesex Stamp Club
(Chapter 9 of the Royal Philatelic Society of Canada)

The theme for 2026 will be
London's Heritage Buildings,
past and present.

www.canpex.ca

Design and printing courtesy of Canadian Stamp News

Win THIS STAMP

Canada #1172h
MINT NEVER HINGED
CAT VALUE \$1,200

Courtesy of R. Maresch & Sons.

39th Edition

SNDC COLLECTORS SHOW

LARGEST MULTI-COLLECTION SHOW IN CANADA

October 24 & October 25
9:00 AM to 5:00 PM | 10:00 AM to 4:00 PM

Espace St-Hyacinthe
2730 Beauparlant Ave, Qc

Admission
Saturday: \$20
Sunday: \$15
Sunday Cosplay Admission: \$10
Children ages 5-14: \$10
Family 2A + 2C: \$45

SalonDesCollectionneurs.com

OTTAWA FALL STAMP FAIR 2026
21ST Annual

RA RA Centre, 2451 Riverside Drive
Ottawa, Ontario in the "Courtside Rooms"

October 3RD and 4TH, 2026
Saturday 10AM - 5PM, Sunday 10AM - 3PM

FREE ADMISSION, FREE PARKING

National Level Dealers Selling Quality Stamps & Covers

ORAPEX 2027
Ottawa's National Stamp Exhibition

64th Exhibition and Bourse
Theme: Social Philately
An APS World Series of Philately Show
Exhibit applications for all subjects welcome.

Saturday, May 1st, 2027 - 10 a.m. to 6:00 p.m.
Sunday, May 2nd, 2027 - 10 a.m. to 4:00 p.m.

Free admission and parking
Free stamps for youth

Nepean Sportsplex
1701 Woodroffe Avenue
Ottawa, Ontario K2G 1W2

www.orapex.ca
info@orapex.ca

QUEBEC CITY STAMP AND OLD PAPER SHOW

Saturday May 29, 2027 - 10 to 5:30 | Sunday May 30, 2027 - 10 to 3

DEALERS - EXHIBITION - SPEAKERS

POSTAL HISTORY
POSTCARDS
POSTAGE STAMPS
COVERS
OLD PAPER
ANTIQUARIAN BOOKS
VINTAGE POSTERS
PHOTOGRAPHY
MANUSCRIPTS

FUTURE SHOWS
MAY 27-28, 2028

Travelodge HOTEL TRAVELODGE
3125, Blvd. Hochelaga,
Québec, QC G1W 2P9

Saturday: \$5
Sunday: free admission
All kids: free admission

Information:
salonduvieuxpapierdequebec@videotron.ca
svpq.ca | Follow us!